

The Binfield Beacon



Your Binfield Parish Community Magazine - there's lots going on!

August/September 2022



This Month

- Church Fete - page 7
- Lighthouse update - page 15
- Binfield Community Choir - page 16
- Cemetery design competition - page 20

Forgotten
Forgotten
Forgotten
Forgotten
Forgotten
Forgotten
Forgotten
Forgotten
Forgotten
Forgotten
Forgotten
Your Sins
Forgotten
Forgotten
Forgotten

Our Mission is to help people follow Jesus and his teachings

Church Office: 01344 421079 office@binfieldcofechurches.org.uk [facebook.com/allsaintswithstmarks](https://www.facebook.com/allsaintswithstmarks)
www.binfieldcofechurches.org.uk Produced by All Saints' with St Mark's Churches

SERVICES & DIARY

Please note that from September we will be trialling going back to 3 services each week.



3G, a group for babies and toddlers, meets every Wednesday during term time.

3G will restart after the summer holiday on Wednesday, 7th September at 10.00 a.m. - 11.30 a.m. at St. Mark's Church on Popeswood Road, Binfield.

Come and join us for lots of fun, with toys, a story and singing plus refreshments for the little ones as well as the adults. It is an opportunity for everyone to make new friends.

You are assured of a warm welcome.

Jan Watts and Team

SEPTEMBER DATES: 7th, 14th, 21st, 28th

SERVICES		
AUGUST 2022		
Sunday 7th August	9.30am	Common Worship Communion
<i>Talk: Two ways to live</i>	11.00am	Informal Service
Sunday 14th August	8.15am	Book of Common Prayer Communion
<i>Talk: Praying in the morning</i>	9.30am	Common Worship Communion
Sunday 21st August	9.30am	Common Worship Communion
<i>Talk: Praying for peace</i>	11.00am	Informal Communion Service
Sunday 28th August	8.15am	Book of Common Prayer Communion
<i>Talk: Praying of protection</i>	9.30am	Common Worship Communion
SEPTEMBER 2022		
Sunday 4th September	8.15am	Book of Common Prayer Communion
	9.30am	Common Worship Communion
	11.00am	Informal All Age Baptism Service
Sunday 11th September	8.15am	Book of Common Prayer Communion
	9.30am	Common Worship Communion
	11.00am	Informal Service
Sunday 18th September	8.15am	Book of Common Prayer Communion
	9.30am	Common Worship Communion
	11.00am	Informal Communion Service
Sunday 25th September	8.15am	Book of Common Prayer Communion
	9.30am	Common Worship Communion
	11.00am	Informal Service
OCTOBER 2022		
Sunday 2nd October	8.15am	Book of Common Prayer Communion
	9.30am	Common Worship Communion
	11.00am	Informal All Age Baptism Service



**Children's
Sunday Group at
St Mark's Church
10.45am - 12.15pm**

For children of school years 1-6
Every Sunday
(during term time except the 1st Sunday of the month)

ARTS & CRAFT, GAMES AND MUCH MORE!

Email daisyridell@gmail.com for info

DIARY		
AUGUST 2022		
Sat 6th	7.45am	Men's Monthly Walk
SEPTEMBER 2022		
Sat 3rd	7.45am	Men's Monthly Walk
Wed 7th	9.00am	Wednesday Women's Walk
	10.00am	3G Toddler Group at St Mark's Church
Thurs 8th	7.00pm	Choir practice at St Mark's Church
Sun 11th	10.45am	Whizz Kids at St Mark's Church
Wed 14th	10.00am	3G Toddler Group at St Mark's Church
Thurs 15th	7.00pm	Choir practice at St Mark's Church
Sun 18th	10.45am	Whizz Kids at St Mark's Church
Wed 21st	9.00am	Wednesday Women's Walk
	10.00am	3G Toddler Group at St Mark's Church
Thurs 22nd	7.00pm	Choir practice at St Mark's Church
Sun 25th	10.45am	Whizz Kids at St Mark's Church
Mon 26th	7.30pm	Practice the presence of God at The Rectory
Tues 27th	12 noon	Silver Service at St Mark's Church
Wed 28th	10.00am	3G Toddler Group at St Mark's Church
Thurs 29th	7.00pm	Choir practice at St Mark's Church
OCTOBER 2022		
Sat 1st	7.45am	Men's Monthly Walk
Wed 7th	9.00am	Wednesday Women's Walk
	10.00am	3G Toddler Group at St Mark's Church

MEN'S MONTHLY COUNTRY WALK

**DATES: Saturday 6th August, 3rd September
and 1st October**

The Men's Monthly Walk takes place on the 1st Saturday of each month. We start at 7.45am from the car park at Oakmede Shops. The walk lasts approximately 1 hour. Be ready for all weathers!

For more information contact Kim Swain on 07894 469633 or kimswain@pm.me

THE SILVER SERVICE

A traditional short service designed and led by our retired congregation members followed by a delicious homemade lunch at St Mark's Church.

Tuesday 27th September at 12 noon

*If you need a lift, please call
Beverly on 07704 437207*



Practice the presence of God

Our Practice the presence of God sessions take place on the 4th Monday of the month at The Rectory. (No meeting in August). This is a time to be still and to practice listening to God and learning to recognise how he speaks to you.

A MESSAGE FROM YOUR RECTOR



A VISION OF JESUS

Author and speaker Brennan Manning tells the story of a woman who visited her priest and told him that when she prays, she sees Jesus in a vision.

“He appears to me as real as you are standing here right now, Father,”

said the woman. “And he speaks to me. He tells me that he loves me and wants to be with me. Do you think I’m crazy?”

“Not at all,” replied the priest. “But to make sure it is really Jesus who is visiting you, I want you to ask him a question when he appears to you again. Ask him to tell you the sins that I confessed to him in confession. Then come back and tell me what he said.”

A few days later the women returned.

“Did you have another vision of Jesus?” the priest inquired of her.

“Yes I did Father,” she replied.

“And did you ask him to tell you the sins that I confessed to him while I was in confession?”

“Yes I did,” the woman answered.

“And what did he tell you?” asked the priest expectantly.

“He said... ‘I forgot.’”

Isn’t that great news? Once you say sorry to God, not only does he forgive you, but he chooses not to remember what you’ve done wrong too (*Isaiah chapter 43 verse 25.*) That’s a bonus and a huge relief isn’t it?

Story taken from Hot Illustrations for Youth Talks. Version 1.0

Luke

Why not give the 8:15 Service a go.....

For many years I used to attend the 9:30 Parish Communion. It was a lovely service and I met lots of nice people there that I knew but for me personally it did not quite hit the mark in terms of how I want to worship.



Then one day, primarily for timing issues, I decided to go to the 8:15 Service. This uses the Book of Common prayer as its guide. This was a revelation for me. This service was exactly what I was looking for.

The service is very traditional, simple and straightforward, peaceful and it gives me time to reflect on my life. I found for me that this ticked all the boxes. There are a couple of readings, the prayers reflect exactly how I need to connect with God and for me best of all there are no hymns (as I don’t enjoy singing). And if you have ever sat next to me during a Parish Communion service you will understand how that might also be a blessing to others.

I am also an early riser. During the week I wake early, I say my prayers then I start my day. The 8:15 service on a Sunday allows me to continue this approach to worship. After the 8:15 service, which incidentally lasts between 30 – 45 minutes, I feel energised for the rest of the day and ready to face whatever it might throw at me.

If you have never tried this service why not come along and try it – you never know you might just become a convert.

John Anderson

From the Registers:



Baptisms

Edward George Sebbage

WEDNESDAY WOMEN’S WALK

A gentle 2-3 mile walk (which takes about an hour) in and around Binfield village, for women of mixed ages and abilities. Usually on the 1st and 3rd Wednesday of the month.

The walks go ahead in all weathers and normally start at 9am from outside Foxes’ Den Café and finish there around 10am for a coffee.

3rd August - NO WALK

17th August - NO WALK

7th September - 9am meet Foxes’ Den

21st September - 9am meet Foxes’ Den

5th October - 9am meet Foxes’ Den



For more information contact either:
Gisele on 07724 889169
Claire on 07912 746289

The Binfield Beacon



The deadline for Beacon Contributions for the October 2022 issue

is Monday 12th September 2022

Please email: Beacon@binfieldcofechurches.org.uk
Claire Thomas (Binfield Beacon Editor)

PLEASE NOTE: The articles in this magazine reflect the personal opinions of the writers and not necessarily those of the Editor or Editorial Team. Furthermore the Editorial Team are not responsible for any errors of fact printed in the magazine. Goods and services advertised in this magazine are not endorsed but readers utilising these facilities retain their statutory rights.

CONTACT US: 01344 421079 office@binfieldcofechurches.org.uk

Rector:

Revd Luke Taylor
07939 526361
lukethevicar@gmail.com
(Friday is Luke's day off)

Curate:

Revd Sam Mortimer
07505 426763
rev.sam.mortimer@gmail.com

Churchwarden:

John Hargreaves - 07973 842624

Church Office:

Hayley Fourie, Administrator
Office number 01344 421079
Office mobile number: 07719 545292
office@binfieldcofechurches.org.uk

PLEASE NOTE: SUMMER HOLIDAY

OFFICE OPENING HOURS:

25th July – 6th September the office will be open on Wednesdays only: 9am – 1pm, except for Wednesday 3rd August when the office will be closed.

Office opening hours:

Tuesday: 9.00am - 1.00pm
Wednesday: 9.00am - 1.00pm
Thursday: 9.00am - 1.00pm

Binfield Beacon Editor:

Claire Thomas
beacon@binfieldcofechurches.org.uk

P.C.C. Secretary:

Kate Hayes
07809 736372

Organist & Choirmaster:

Michael Hawkins
01344 411681

Bell Tower Captain:

Jan Glen
07840 104455

Treasurer:

Sarah Muller
01344 428782
Treasurer@binfieldcofechurches.org.uk

Stewardship Secretary:

Andrea White
01344 421079



Fundraising Team

fundraising@binfieldcofechurches.org.uk

Church Website:

www.binfieldcofechurches.org.uk

We are also on *Facebook*

facebook.com/AllSaintsWithStMarks

The Church Office is sited in St Mark's Church

St Mark's Church

Popeswood Road
Binfield RG42 4AH

All Saints' Church

Church Hill
Binfield RG42 5NS



Pastoral Care Visiting Team - need a friend?



In All Saints' and St Mark's Churches we have a small pastoral care team who are happy to visit and befriend the people of Binfield. So, if you have recently moved to the area and don't know many people; if your family live far away; if you are a Mum at home with a baby and would like adult company; if you find it difficult to get out or just fancy a friendly chat over a cup of tea, please get in touch with one of us. You don't need to be a member of the church, just enjoy some company occasionally!

Jane Aylwin	tel. 481692
Jill Hanson	tel. 452694
Margareta Hawkins	tel. 411681
Sarah Muller	tel. 428782
Gisele Taylor	tel. 07724 889169
Dave Dawson	tel. 360389

Or contact the church office on 01344 421079 or email office@binfieldcofechurches.org.uk



Bereavement Support Team

We will all suffer loss, grief or bereavement at some time in our lives, mainly through death, but also in other ways such as relationship breakdown, loss of a job, or sudden disability. The Bereavement Support Team are not counsellors, but can offer support and companionship if you are suffering a loss of any kind. There is no charge for a visit. All support team members have ID badges.

Friday Morning Bereavement Group Coffee Morning

Foxes' Den Café on Fridays 10.30am – 11.30am
(term time only)

Peer to Peer support open to anyone dealing with grief. It is not a counselling group, just a friendly get together over a drink.

If you would like to talk to a member of the team, in confidence, please contact Liz Hall for more information orinocco@hotmail.co.uk /07850 799434 or Margareta Hawkins 01344 411681

CAN YOU HELP?

All Saints' Church Sunday Service Rotas

We are looking for help on a Sunday morning with:

Welcoming Reading Prayers

Refreshments after the services

To find out more or be added to one of these rotas please contact Hayley at the Church office on 01344 421079 or email office@binfieldcofechurch.org.uk.



Praying for and with you

We have weekly prayer sheets — please email office@binfieldcofechurches.org.uk if you would like something to be included.



St Mark's Church Hall

Available for booking.

Please contact the church office on 01344 421079 or email office@binfieldcofechurches.org.uk for more information or to make a booking.

CHILDREN AND YOUTH



Hey Everyone!

We hope you're having a wonderful time enjoying the sunshine, and are making the most of your school holidays! We've had an amazing time at Whizz Kids and Oasis making the most of the weather, and we have lots of exciting things coming up...



At Whizz Kids we've been exploring the story of creation and what amazing things God chose to make in the world. As well as the sky and sea, and plants and animals, God also made US and He made us in His image! We played games to help us remember the different parts of creation, like a scavenger hunt, and even had some science experiments to help us better understand God's amazing world. Because of the great weather we've also been doing lots of playing outside, with ice lollies to cool off after, and we ended the summer term with our annual water fight!



Each week at Oasis we've been taking a headline from the news and using it as a discussion point to address bigger issues in the world and what we think of them. We've talked about politics, the monarchy, the environment and celebrity news too. We share our thoughts in an interactive way to get us thinking about what we can do to tackle issues in the world today, and it's been great hearing different thoughts on the topics. We've also continued our weekly Taskmaster challenge, which has included building high towers, a paper plane race, and making sculptures!

This month we are heading away on our first residential trip to Satellites youth festival and we are SO excited! This is a chance for our group to meet new people, explore deep questions about their faith, and have a week away full of activities, parties and concerts. Please pray for us as we set off, that the young people have an amazing time and everything goes smoothly.



Thank you for your support this academic year, we hope you have a wonderful summer and we'll see you back in September!

Daisy - Children's and Youth Worker (daisyridell@gmail.com)



FUNDRAISING NEWS



It was brilliant to be back at Party Bye the Pitch at the beginning of July. A big thanks to Daisy and her helpers who ran the lovely tea tent and raised funds for the church, and thanks also to those who donated delicious cakes and bakes! At least the team got to stay dry under the gazebo, although the rain didn't manage to dampen everyone's spirits! Well done organisers!

We are looking forward to getting into the planning stage for the next lot of work at All Saints'. Any repair work highlighted as necessary in the Quinquennial Survey will be balanced out with the PCC's vision to improve the church for our visitors. We will be restarting our fundraising in earnest to support this work, so please get in touch if you have any ideas or would like to be part of this.

Events and Activities

Our annual **Binfield Calendar Photo Competition** is now open, so make sure you snap some shots of our beautiful village as you are out and about this summer! Be ready to send them in to us at the end of August, and the winners will be announced at the Church Fete. We will then look forward to assembling the top photos into the 2023 Binfield Village Calendar.

Also now open for entries is the **Binfield Cemetery competition**. A great chance for all ages to get involved in helping design how this important space in our community could look! Winners for this will also be revealed at the Fete.

Also look out for a full update on the **Church Fete** and how you can help make the return of this event a huge success!



How to donate or fundraise:

We would really appreciate your donation; however big or small, it will all help!

- **Cheque:** send a cheque to the church office. Please make sure it's made payable to "Binfield PCC". Please write 'Church Care', 'General Funds', 'Lighthouse' or where you would like your donation used on the back and include your name and address if you are a UK tax payer so that we can claim Gift Aid.
- **BACS:** Name: Binfield PCC, Account Number: 80175528, Sort Code: 20-11-74 Please add your name + a reference (as above) if you would like to specify where your donation goes.

Don't forget to Gift Aid it if you are a UK Tax Payer - this will add an extra 25% to your donation!

Contact the church office for more details, or see the church website more information and other ways to raise money!

Shop and raise funds at smile.amazon.co.uk and easyfundraising.org.uk: search for Binfield PCC

With many thanks from the Fundraising Team:
www.binfieldcofechurches.org.uk

fundraising@binfieldcofechurches.org.uk
www.facebook.com/AllSaintsWithSt.Marks

The Parochial Church Council of the Ecclesiastical Parish of Binfield: Registered Charity No: 1149382



CHURCH NEWS

Binfield Church Fete 2022

11 SEPTEMBER 2022, 11AM - 3PM
ST. MARKS' CHURCH, BINFIELD

We are looking forward to this traditional day out in the Binfield Calendar with all the familiar stalls and plenty of entertainment...

The date is coming up fast so there are a few things we'd appreciate you looking at:

As ever, you are all a huge part of the success of this event, and we can't run it without the support and contributions from our village! We would be hugely grateful if you can help with the any of the following.

Please sign up and support us where you can, thank you!

Volunteers Needed!: We would really appreciate having some lovely volunteers who could help us with setting up the Fete, manning the stalls and clearing up afterwards. You can sign up via the link available on our website and Facebook page, or you can email us to let us know what you can help with at binfieldchurchfete@gmail.com.

Guest Stalls: We have already booked a great selection of guest stalls, but if you know of anyone interested in booking a pitch for the day, please get in touch!

Silent Auction: We have been donated some amazing prizes in previous years for our Silent Auction, from a week in a holiday home in Malta, golf vouchers, to babysitting. If you have anything you would like to offer, for the Auction or also for our Raffle, please contact us! If you would like to read more details about prizes on offer and how to bid, see our website.

Raffle Tickets: Raffle tickets will be on sale from church, the church office or the Foxes' Den.

Tombola Donations: We would also be grateful to receive any good quality donations for our Tombola stalls: bottles of alcohol, boxes, packets of bars or fun size chocolates and biscuits.
Any new, unopened books, games or toys etc for our Children's Tombola.

Please note this year will NOT be running the book and pre-loved toy stalls and so we cannot take any old books, old toys or bric-a-brac, thank you!

The church office will only be open on a Wednesday over the summer, so bring any donations to St. Mark's on these days, or drop them at the collection point in the Parish Council offices.

Homemade Cakes and Preserves:

The offerings of our tea tent rely hugely on any donations from all of you. Please have a think about what you may be able to rustle up in the kitchen for us!

The Dog Show: Start training your dog to take part in our popular Dog Show. Check out the categories to enter them in on our website - classes will cost £2.00 each (entry on the day).

**Thank you for helping us make the day a big success.
We're looking forward to seeing you there!**



WWW.BINFIELDCHURCHFETE.CO.UK
WWW.FACEBOOK.COM/BINFIELDCHURCHFETE
EMAIL: BINFIELDCHURCHFETE@GMAIL.COM



COMMUNITY NEWS

Binfield Patient Group

The surgery encourages patients to be involved in relevant issues relating to provision of their healthcare. This means having a say in the way your local health services are delivered.

The voluntary patient group meets approximately six times per year; the practice is always represented, usually by the practice manager and one of the GP partners.

Why have a Patient Group?

The Binfield Surgery Patient Group was set up to:

- **Provide the patient perspective by:**
 - Conducting patient surveys or collecting feedback in the waiting room
 - Sharing good practice by networking with other patient groups
 - Lobbying to improve a whole range of health services
- **Promote health matters by:**
 - Organising events on important health needs
 - Signposting patients to local self-care and well-being services e.g. Bracknell Forest Community map
 - Raising awareness of key public health messages
 - Encouraging appropriate use of relevant services, e.g. self-management courses and Talking Therapies <https://talkingtherapies.berkshirehealthcare.nhs.uk/>
- **Improve communications by:**
 - Building two-way relationships between patients and the practice
 - Monthly Patient Information, published in the Binfield Beacon (distributed to all houses in the Binfield area)
 - Information posters on community noticeboards/social media (if you are aware of a noticeboard without this health information, please contact the patient group)
 - Improving the practice leaflets and website
- **Influence the development of services by:**
 - Advising on the development of new or existing

practice premises

- Representing patient views on the purchase of health services
- Co-ordinating with other patient groups to improve wider healthcare delivery
- Collaborating with the practice to provide new services
- Representing local views on the services provided by the wider NHS organisations

To summarise all of the above we exist to make the relationship between patients and our practice stronger, which is critical to the provision of modern, high-quality general practice.

We would love to welcome additional new members to broaden the views of the group. If you are interested in joining the group please contact Marie Hobden, Practice Manager on telephone (01344) 286264.

NEW PATIENTS:

The surgery welcomes the registration of new patients to the practice. To register as a patient, please visit the surgery.

If you are on the internet please visit

<https://binfieldsurgery.co.uk> to check that you live within the surgery practice boundary. Further information for potential new patients is available on this internet site.

BLOOD PRESSURE READINGS:

You should measure your blood pressure at home for a week and give the readings to your GP on your next visit. Blood pressure readings tend to be more accurate with home blood pressure monitors as patients tend to be more relaxed at home and not in a stressful situation.

Your local pharmacy should be able to sell you a home blood pressure monitor. Some local pharmacies are rolling out having patients blood pressures taken in store.



Duncan Johnston - Binfield Patient Group



Raise **FREE** funds
for us every time you
Shop online



Search for 'Binfield PCC' and select to support this cause!

COMMUNITY NEWS



RE-WILDING

Re-wilding has become a bit of a trendy term in the world of conservation. However, it is also proving to be divisive. In part, the controversy comes from the fact that the term does not have a clear meaning and has been used to cover a range of conservation approaches from leaving nature alone to introducing a key-stone species like a beaver or a wolf. I quite like Rewilding Britain's definition – "*the large-scale restoration of ecosystems to the point where nature is allowed to take care of itself.*", but even this leaves plenty of room for confusion.

Some re-wilding projects have been running for more than a decade and are only now starting to produce information about what is and isn't happening. A study has just been published showing that introducing beavers into a wetland leads to an increase in aquatic insects which leads in turn to an increase in insect-eating birds. However, another recent study showed that allowing natural processes to adjust the route of a river, and the mix of tree species in that river valley, only led to a very gradual change in insect numbers and hence numbers of insect-eating birds.

It seems that nature responds very quickly in some circumstances, such as when beavers, pigs, cattle or humans "re-engineer" an area, but very slowly in others, such as when degraded land is left alone. Areas that have been over-grazed can take decades to recover and may never have the mix of species that were there before grazing started. On the other hand, some areas seem to spring back to life when left alone. Earlier this year, a project to clear bracken, prior to tree-planting, led to the surprise discovery

of a large area of bluebells that no-one seemed to know about.

One of the nearest re-wilding projects to us is at the Knepp Estate in East Sussex (<https://knepp.co.uk/home>). A loss-making cattle farm has been transformed. Reducing stocking density and the introduction of a range of heritage species has turned Knepp into a haven for wildlife, and a popular tourist destination, whilst producing high quality meat. Knepp is also challenging some of the assumptions made by conservationists. For example, turtle doves are doing well at Knepp, unlike in most of the rest of England. Knepp's turtle doves are choosing to use different habitats and eat different food than those that form the basis for conservation projects elsewhere.



Conservationists are learning that different forms of re-wilding work best in different places, and that some species are more reliant on humans and our land management practices than others. It seems likely that in an area that has been as transformed by humans as the Thames Valley, then some intervention will be needed. Perhaps we should release lynx into Bracknell Forest!

Binfield Environment Group can be contacted by email at binfielddeg@gmail.com, via our Facebook group, or via our website <https://binfielddeg.wixsite.com/binfielddeg> **Mike Coker**



BINFIELD W.I.

It is a great privilege as the newly elected President of Binfield W.I. to be writing my first article for the Summer double issue of the Beacon.

After all the excitement and hard work at the Jubilee Celebration at Farley Wood on the 4th June it was the members turn to relax and celebrate at their own Jubilee lunch on Friday 17th June.

We were delighted to have as our guest Lady Rosemary Muir, a local resident, who was one of the 6 maids of honour at the Queen's Coronation in 1953. Lady Rosemary was born in London but grew up at Blenheim Palace. Her father was John Spencer Churchill 10th Duke of Marlborough and Winston Churchill was her Uncle. She was one of the two maids of honour to travel in the gold coach with the Queen from Buckingham Palace to Westminster Abbey. After a delicious lunch of Coronation chicken (of course) followed by the winning dessert of Jubilee trifle, all made by our own ladies. Lady Rosemary enthralled us with her recollections of the day including the very bump uncomfortable ride in the gold coach.



The dress she wore on the day had been in store at Blenheim but has recently been restored to its former glory before going on display there to mark the Platinum Jubilee. What a lovely end to our celebrations.

W.I. life has continued with a variety

of activities. A Mid-Summer evening saw a few hardy members meet at the Stag and Hounds for a "Bat Hunt". Lead by local environmentalist Mike Coker we set off with bat detectors and soon located a number of bats and were able to listen and watch them feeding at close quarters. We then adjourned to the Stag and Hounds where Mike played some recordings he had made of the evening and discussions continued with a well-earned drink.

On the 6th July, 30 members joined a coach for a day trip to Bournemouth. The weather was kind for our first outing for 3 years. There is always so much to see and do in England's top seaside resort and the ladies enjoyed fish and chips, a paddle in the sea, sitting in deck chairs watching the world go by and a couple even took to the zip wire on the pier. We all returned home happy, but exhausted.



In August there is no evening meeting but we will continue to celebrate Summer with a lunch at Mill Ride Golf Club on Thursday 11th August.

Normality returns in September with our meeting at Binfield School Hall on 8th September at 7.15 when our speaker will be Annabel Brash "Come Bollywood with me"

New members and visitors are always welcome. If you need more information, please contact me by phone 07804 189322 or email binfieldwi@berkshirewi.co.uk

Mary Wharphshire

Boiler & Heating Problems?
Family Run Established Local Company

DRAYTON BOILER SERVICES

New Installation
Emergency Repairs
Maintenance & Upgrades

Service, Repair & Installation

Over 60's Discount On a New Boiler

With over 25 Years Experience

Vaillant WORCESTER Bosch Group ideal Stelrad POTTERTON BAXI

Binfield 01344 669885

www.draytonboilerservices.co.uk

safe 234399

Plus Three Nurseries
 where learning is fun

Plus Three Nurseries Ltd
 Farley Wood & Martins Heron

FREE Soft Play
FREE Toddler Yoga

FREE SPACES AVAILABLE FOR IMMEDIATE START
 Registered for children from 18 months.

To receive a prospectus and arrange a visit to the nursery, call Sue Butler on 07970 030769

www.plusthreenurseries.com
 Email: plusthreenursery@aol.com

Woodchips Ltd
 Tree surgery

Checkatrade.com
 Where reputation matters

Family run business in Harmans Water, Bracknell
 Fully Insured • NPTC Qualified • 10+ years experience

- Tree felling, reducing, reshaping and maintenance
- Stump grinding
- Hedge trimming and maintenance
- All green waste recycled

FREE QUOTATIONS AND ADVICE

COMPETITIVE PRICES

01344 425733 or 07867 523823
 jose@woodchipsLtd.co.uk www.woodchips.org.uk

G. SIBLEY REMOVALS

We live in Binfield!
 From one item to whole house
 Flat & Office
 Collection & Delivery
 All Clearances Undertaken
 No job too big or too small
 FREE QUOTE

01344 424367 / 07886557025
 garysibley67@yahoo.co.uk

DANCE
DANCE
DANCE

Ballet (RAD)
 Modern Theatre (ISTD)
 Tap (ISTD)
 Contemporary (ISTD)
 Acrobatic Arts (BATD)
 Adult Ballet
 Adult Tap

Classes held at:
 The Farley Wood Centre
 Binfield RG42 1FW
 07944 394097 / 0118 989 2531

Lynnette Stephenson
 Academy of Dance

Abacus
 TUTORS OF WOKINGHAM

Primary and Secondary & University tuition
 Key Stage exams, Common Entrance and 11+ Tuition,
 Non-Verbal Reasoning tests, GCSE, IB, AS and A-levels.

Tutors are available for many subjects and levels:

Established in 2002 **01344 862286**

All Tutors DBS checked www.Abacustutors.co.uk
 New Tutors are always welcome

Landmark Tree Surgery

'Berkshire's Best Kept Secret'
 (Homes and Gardens 2017)

For the most professional and trusted tree care company
 Established for over 30 years

We live in Binfield!

Call Mark 07860 812542 / 01628 630071
 info@landmarktreesurgery.co.uk
 www.landmarktreesurgery.co.uk

Binfield Pre-school



"Where your child never stops learning"

Binfield Pre-school has been providing quality childcare in the local community since 1982. We have friendly qualified staff to help young children explore and learn through play in our well-equipped settings. We welcome children aged between 2 and 5 Years

Ofsted approved and Good Rating
 Member of the Early Years Alliance (EYA)
 Registered for Funded Children
 Registered Charity No. 1020270

For more info contact info@binfieldpreschool.net
www.binfieldpreschool.net

iClean

Domestic and Commercial Professional Cleaning Services



- ◆ Regular domestic cleaning
- ◆ Ironing
- ◆ Housekeeping: live in or live out

Call Ruth or Elena
 01344 481993
 07828 052846
info@iclean-home.co.uk

www.iclean-professional-services.com

ADVERTISE HERE

FOR £33 A MONTH

call 01344 421079 or

email office@binfieldcofechurches.org.uk

KLM Window Cleaners

YOUR LOCAL FRIENDLY WINDOW AND GUTTER CLEANING SERVICE

TRADITIONAL SQUEEGEE OR REACH & WASH SYSTEM

Based in Binfield

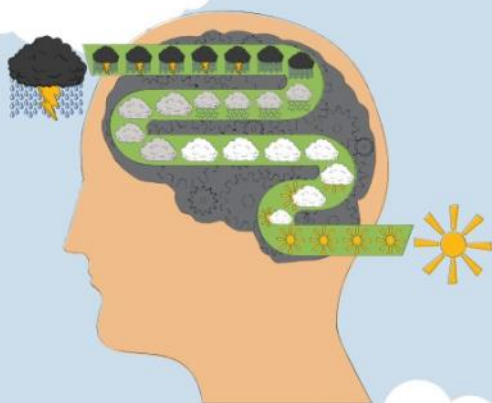
Call Matthew for a free quotation

07833 717369

www.professional-window-cleaning.co.uk

Facebook - Klm Window Cleaners

If you can't **CHANGE** it,



change the way you **THINK** about it

ACTION FOR HAPPINESS

Find ways to bounce back
www.actionforhappiness.org



Tall Oaks

01344 568 779

info@talloakscontractors.co.uk

talloakscontractors.co.uk

- Arboricultural Services
- Drainage
- Grounds Maintenance
- Groundworks
- Landscape Construction
- Fencing

We'd love to help you keep your trees healthy, your grounds looking naturally beautiful and your workplace or local area operating seamlessly with the greenery around it.

Contact our specialist team now to arrange a free, no-obligation quote – or to ask any questions you may have about Tall Oaks and our services.



Philip Briggs

20 Farley Copse

**Interior & Exterior
Painting and Decorating**
For free estimates ring

01344 483410
Mobile: 07754199591

ALAN WARD PAINTER AND DECORATOR

Local decorator
with 30 years experience

Internal and Exterior
Painting and Decorating Services

For a free estimate with **NO** VAT
please call:

Tel : 01344 442402
Mobile : 0753 9640482
Email: a-ward@live.co.uk

K. GIER

ELECTRICAL CONTRACTOR

COMPETITIVE PRICES
& FREE ESTIMATES

Tel: 01344 454494
Mobile: 07721 719836

"FRAMPTON"
TERRACE ROAD SOUTH, BINFIELD

Stracey Roofing

**Slating, Tiling, Flat Roofs,
Repairs, Guttering, Lead Work**

Over 30 years Experience
Local References Available
Fully Insured

T: 07774 002478/ 0118 9343420
E: straceyroofing@yahoo.co.uk
www.straceyroofing.co.uk
Shurlock Row, Reading

D.B Roofing

Accomplished Craftsmen
With A Wealth Of Experience

- Tiling And Slating
- Lead Work
- Flat Roofs
- Re Roofs
- Re Pointing
- General Roof Maintenance
- Free Estimates
- All Work Guaranteed

Call For A Friendly And
Affordable Service On

01344 453 732
07799 037866

A.R Bright

Local Builder

All types of building work

Painting & Decorating
Fascia Boards
Fencing
Patis

Tel: 01344 454537
Mobile: 07710 740230
Email: rbright1@sky.com



SAVAGE & SON

PLUMBING, HEATING AND BATHROOMS

GAS CENTRAL HEATING & BOILER INSTALLATIONS
BOILER SERVICING, CERTIFICATES, MAINTENANCE & REPAIRS
BATHROOM DESIGN & INSTALLATION
GAS COOKERS & FIRES

FULLY INSURED
GAS SAFE REGISTRATION: 648978



ALAN: 07899950848/01344 481079
SAM: 07711247438
alan.savageheating@hotmail.co.uk

HEATcare

HEATING & PLUMBING SPECIALISTS

- BOILER SERVICING, REPAIRS & INSTALLATIONS
- CENTRAL HEATING REPAIRS & INSTALLATIONS
- GENERAL PLUMBING SERVICES
- POWER FLUSHING
- GAS HOB AND COOKERS
- LANDLORD CERTIFICATES
- ALL WORK GUARANTEED AND INSURED

SAME DAY EMERGENCY CALL OUT

T. 01344 884080
M. 07860 159812

INFO@HEATCAREBERKSHIRE.CO.UK

WWW.HEATCAREBERKSHIRE.CO.UK



Southern Domestic Appliance Services



Domestic Appliance Sales & Repairs
01344 423755

Geoff & Heather Tibble
Foxley Lane, Binfield
sdas.binfield@btinternet.com

DISCOVERY MORTGAGE SERVICES LTD

CONSIDERING MOVING/BUYING HOUSE?
CURRENT MORTGAGE RATE DUE EXPIRE?
LOOKING TO IMPROVE YOUR HOME?
ONSIDERING A BUY TO LET PROPERTY?

WE ARE **COMPLETELY INDEPENDENT**
AND OFFER WHOLE OF MARKET ADVICE

CALL OR E-MAIL FOR YOUR FREE NO OBLIGATION ENQUIRY

TEL: **07900 803804**

E-MAIL: **JOHN@DISCOVERYMORTGAGES.CO.UK**

Discovery Mortgage Services Limited is an Appointed Representative of JLM Mortgage Services Ltd, which is authorised and regulated by the Financial Conduct Authority. Registration numbers 832392 and 300629. Further details may be found by visiting www.fca.org.uk

Thames Valley Will Services

4 Dunley Villas, Binfield, RG42 4HE

tel: 01344 641885 or

e-mail: tvwills@yahoo.co.uk

PROFESSIONAL HOME VISIT SERVICE

For Wills, Pre-paid Funeral Plans,
Lasting Powers of Attorney,
Executor and Probate Service.

Free no-obligation consultation
Appointments at any time

Visit: www.tvwills.com and
www.buywithconfidence.com



*Hate cleaning but would love a clean oven?
We clean your oven.....so you don't have to!*

To have your oven professionally cleaned,
please call, text or email your local Oven Wizard

Larry Lasenby

01344 485234 or 07851 794830

larrylasenby@ovenwizards.com

www.ovenwizards.com/bracknell



Find us on
Facebook



FOXLEY GARDENS

Landscape Restoration & Construction Services

WEEKLY GARDENING
MOWING SERVICE
TREE SURGERY
HEDGE CUTTING
BORDER PRUNING
WEEDING & DIGGING
PLANTS & MULCH
AND MUCH MORE

CALL JAMES 07752 065192
E: FOXLEYGARDENS@LIVE.COM

24-7 COMPUTER DOCTOR

No Fix, No Fee



No Callout Fee

We come to you on demand
Any I.T. problem solved
remote support

07915 077227 Support@247ComputerDoctor.com
www.247ComputerDoctor.com

BINFIELD CHIROPODY

- Fully qualified and insured
- Modern fully equipt surgery
- Ample free parking

HELENA GOLD
Tel: 01344-459371



SEAMSTRESS

Bespoke curtains, blinds, cushions, etc
Clothes alterations
School PE kit monogramming
Name taping for school clothes
...the list is endless!

All types of sewing undertaken
Please contact Alison Collett:
07876 591 411

ECOTECH PEST CONTROL

A LOCAL, FRIENDLY & RELIABLE
PROFESSIONAL PEST CONTROL SERVICE
COMMERCIAL & DOMESTIC
RATS, MICE, MOLES, WASPS, ANTS & MORE
WWW.ECOTECHPESTCONTROL.CO.UK
INFO@ECOTECHPESTCONTROL.CO.UK
01344286136 07548343658

Checkatrade



MOBILE HAIRDRESSER

Reliable and experienced
mobile hairdresser
Contact Sharon Bennett

Tel: 01344 593462
Mobile: 07747 481334

Farley Copse, Binfield

Miles & Daughters Funeral Directors

Proudly serving the local community

- 24-hour service
- Bereavement advice
- Transparent pricing
- Private chapel of rest
- Floral tributes
- Memorial masonry
- Home visits
- Prepaid funeral plans

Binfield

01344 452 020
Ivydene House, Forest Road
RG42 4HP

Call us for immediate support, advice or to arrange a home visit. We are here to help 24 hours a day.

Offices also in Winnersh, Reading, Twyford, Crowthorne, Maidenhead and Tadley

www.milesfunerals.com

SUMMER HOLIDAY WORDSEARCH



AEROPLANE
BEACH
BOAT
BUCKET
COACH
HEATWAVE
LILLO
PADDLING POOL
RELAX
SANDCASTLE
SCHOOL HOLIDAYS
SEA
SPADE
STAYCATION
SUMMER HOLIDAY
SUN
SUNBATHE
TIME OFF

L	Y	O	N	O	L	Y	D	O	S	X	F	T	S
O	Y	A	D	I	R	F	Z	Z	I	F	I	C	T
O	L	D	D	T	S	U	N	B	A	T	H	E	A
P	H	M	E	I	N	R	E	B	E	O	E	O	Y
G	L	C	D	M	L	E	H	T	O	V	E	I	C
N	A	S	A	E	R	O	P	L	A	N	E	C	A
I	S	E	P	O	N	C	H	W	B	O	E	E	T
L	S	P	S	F	C	O	T	R	L	B	B	A	I
D	U	I	C	F	L	A	B	I	E	U	L	S	O
D	O	P	E	I	E	M	L	A	C	M	V	R	N
A	D	G	D	H	H	U	C	K	E	Q	M	H	Z
P	X	A	L	E	R	H	E	I	X	I	D	U	N
L	Y	B	I	E	L	T	S	A	C	D	N	A	S
S	E	N	A	O	R	H	E	I	G	P	M	N	G

Advertise here

For £22 a month

Call 01344 421079

or email

office@binfieldcofechurches.org.uk

COMMUNITY NEWS



News from the Parish Office

Binfield Parish Council upcoming meetings:

August 2022

Tuesday 2 August	Amenity Committee	8pm
Tuesday 9 August	Parish Council	8pm
Saturday 13 August	Parish Councillor Drop-In Session	10am-12pm
Tuesday 23 August	Planning & Transportation Committee	8pm

September 2022

Saturday 10 September	Parish Councillor Drop-In Session	10am-12pm
Tuesday 13 September	Parish Council	8pm
Tuesday 20 September	Planning & Transportation Committee	8pm

Upcoming dates for your diary

Wednesday 31 August	Summer of Fun event at Farley wood	11am-3pm
Sunday 23 to Sunday 30 October 2021	Arts Week (Binfield, Warfield, Winkfield) promotes and encourages active participation in and support for the very wide range of arts and crafts available in our local area for all ages. Please see www.arts-week.org	Various dates & times. Check website for details.

Parish Councillor Drop-In Session – Saturday 13 August & 10 September (10am-12pm)

Come along to The Foxes' Den café to meet Parish Councillors to discuss the Parish Council's strategy and plans, and/or ask any questions or raise any concerns you may have about matters concerning Binfield. The Parish Councillors look forward to meeting with you. Find upcoming drop-in sessions, meetings and events on our website:

<https://www.binfieldparishcouncil.gov.uk>.

Summer of Fun – 31st August 2022

Binfield's summer of fun will be held at Farley wood on the 31st August from 11am-3pm. There will be inflatables, crazy golf, and balloon modelling as well as other stalls and activities available on the day. All events are free for families in the borough. We hope to see you there.

Christmas Survey

The Parish Council are seeking feedback from residents regarding Christmas decorations in and around Binfield village, as your views are very important to us. If you are interested in sharing your thoughts, a very short online survey can be accessed via the Parish Council website, www.binfieldparishcouncil.gov.uk. Alternatively, you can send an email to office@binfieldparishcouncil.gov.uk

Bracknell Forest community Governance review

Bracknell forest council is conducting a borough wide community governance review. It is currently in stage two of the consultation and this stage is open until the 11th September 2022. For more information and details of how to submit your comments please see the following website:

<https://www.bracknell-forest.gov.uk/elections-and-voting/community-governance-review>

There will also be information and submission forms and submission box available at the Parish Council office.

Could you be a Parish Councillor?

There is currently one vacancy to be filled by co-option and we would welcome applications from any interested parties. Please visit the Parish Council website to check application criteria, find out how to apply, and more about the role of a Councillor: <https://www.binfieldparishcouncil.gov.uk/parish-councillor-vacancies>

Ceri, Amanda, Purveen, Alisa & Tracey

01344 454602 Binfield Parish Council at the Parish Office, Benetfeld Road, Binfield, RG42 4EW

Parish Office working hours: 8.45am-1pm Monday to Friday

office@binfieldparishcouncil.gov.uk

www.binfieldparishcouncil.gov.uk

COMMUNITY NEWS

The Foxes' Den

COFFEE FOOD COMMUNITY



My apologies for a bit of a delay last month with the community activities chalkboard list in the Den; COVID finally struck my household and wiped me out for the first week of July. We avoided it for all lockdowns despite being at the heart of the community but it finally got us! All back and raring to go now. Although now we are into the school holidays it is all change again...

Farewell to Jenny...

The biggest change is that we have said goodbye in July to the lovely Jenny who has run Rhyme Time almost every Monday morning since the Den opened. She has kept the little baby and toddler group going as much as she could throughout the lockdowns and even continuing when her youngest started big school. They are all setting off for distant shores and we wish Jenny and her family all the best with grateful thanks from all of us here and all the little ones that have had so much fun.

Welcome Fiona!

Going forward Jenny is handing over the mantle of singing and boogie master to Fiona so that Rhyme Time can keep going – new term starts on Sept 5th. Good luck Fiona!

Please note that some of our other groups will also be having a summer break. Please check before coming along. Into next term we are also looking at introducing new community activities – if you have any ideas, please get in touch asap!

Have a great summer! Claire x

foxesden.co.uk fb.com/thefoxesdencafe 07919 448254
Benetfeld Road, Binfield. RG42 4EW

SUMMER TIME FOXY LUNCHES

Once again it is the school holidays and lots of us have hungry mouths at home always needing more. If you are struggling to feed yourself or your family at any time, please don't go hungry.



Our Foxy lunch boxes are **FREE** and we can arrange to have extra supplies delivered if you need them. Call or email me in the strictest confidence and we will make sure that you have food on your table. Claire xx
07919448254 claire@foxesden.co.uk



We are open 7 days a week!

Don't forget we open an hour later during school holidays:
**9am – 5pm weekdays but still
10am-4pm weekends**



The lighthouse Program has moved to a monthly delivery of foods to our clients, as opposed to weekly. This is in part to encourage our clients to explore all the new and re-opened facilities available to them. Many of the facilities are offering perishables as well as cupboard stock and this allows for the individuals to choose

for themselves what they would cook and eat. For the majority the facilities are only a short walk away Our monthly delivery is a "bumper" pack and includes both frozen and fresh meals to support our clients, no less than 12 meals at a time.

We continue to support pets! Wet dog food always welcome.

Our next food delivery will be August 16th. Items can be dropped to St Marks Porch on the day

- Tinned dog food
- Small cartons of long life fruit juice

- Bottles of squash
- Biscuits
- Pre made puddings – small jellies/rices etc
- Cereal bars
- Crisps/Snacks
- Bags of sugar (many of our clients are partial to a double sugar in tea & coffee)
- Fresh food donations can be accepted if they can be prepped/frozen – contact Amanda.thrower@hotmail.co.uk

We are unable to take clothes in, we do not have storage facilities. The same applies for bedding. Our clients have been housed in either permanent housing or at a minimum B&Bs so they do have a roof and a bed, with access to microwaves & cookers. The real need is for food.

It is anticipated that demand will rise for obvious reasons, we plan to return to weekly meals (potentially on site) from September. If you are interested in helping in any way please let us know. Amanda 07825 341559 **Amanda Thrower**

COMMUNITY NEWS



BATTLING THE MONDAY BLUES WITH THE BINFIELD COMMUNITY CHOIR

Launching in the aftermath of covid - when isolation and loneliness became increasingly commonplace - a community choir seemed the perfect antidote.

Research shows that singing is great for building community, increasing happiness and improving both wellbeing and physical health (breathing, posture and muscle tension*)... and Binfield's Community Choir aimed to do just that.

Since its launch in November 2021, the choir has been meeting at 8pm on Monday nights in the Foxes' Den to enjoy each others' company, laugh, share tea and cake and, of course, benefit from all the wellbeing effects of singing together.



"We have a great time! Choir members tell us they come out feeling better and uplifted after each session" says Marianne Lamberth, secretary of the Binfield

Community Choir. "It's open to anyone, there are no auditions, we don't need you to be able to read music. Just bring yourself and your unique voice and enjoy the experience of singing together as a community".

The choir has posted a number of videos singing together with a live band in the Foxes' Den <https://youtube.com/channel/UCExTdQ-op2BvEGxzID72hg> and performed live at the recent Platinum Jubilee celebrations at Foxley Fields on June 2nd where they sang a specially commissioned

song for the occasion, joining hundreds of choirs from all around the Commonwealth.

More recently they joined Binfield's 'Party By The Pitch' on July 2nd, entertaining hundreds of attendees with a variety of songs from Bill Withers to Ed Sheeran. "We often sing songs that have something to say and are positive and uplifting" says choir director, Peter Manners-Smith. "So far we have covered areas including life-long love, supporting each other as a community, prejudice and injustice". The choir has even sung about war - they started learning John Farnham's 'You're the Voice' shortly after Russia's invasion of Ukraine. "The song was originally inspired by a 1980s nuclear disarmament protest march in London and in a way, it helped us process the feelings we were all experiencing together as a community," says Peter.

If you'd like to join, the choir is currently open to new applicants and the autumn term starts on Monday 12th September. For details please visit [Facebook.com/binfieldcommunitychoir](https://www.facebook.com/binfieldcommunitychoir) or contact binfieldcommunitychoir@gmail.com.

Peter Manners-Smith

*[*https://www.ox.ac.uk/research/choir-singing-improves-health-happiness--and-perfect-icebreaker](https://www.ox.ac.uk/research/choir-singing-improves-health-happiness--and-perfect-icebreaker)*



BINFIELD LIBRARY NEWS

Summer Reading Challenge

It has been so lovely to join so many children onto the Summer Reading Challenge. Remember to collect your prizes from your local library as you read six books over the summer. You have until Saturday 10th September to complete the 'Gadgeteers' challenge.

Join our special children's craft events every Thursday at 10am. The cost is £2. No need to book!

Split pin astronauts - 4 August 2022
Junk modelling - 11 August 2022
Awesome aliens - 18 August 2022
Rain sticks - 25 August 2022

Are you a keen coder? Why not enter Bracknell Forest Libraries' Scratch Competition for children aged 11 and under. The challenge is for you to write a game in Scratch with a science theme, so ... space, climate, human body, experiments, inventions... There's almost no limit to the list of ideas and

how you can interpret them. You have until 31 August to send in your program, but we can only accept one entry per person, so

don't rush. The winner will receive a gorgeous code club t-shirt.

Code your game in Scratch, save it and then once you've tested it, played it, refined it and played it again, save and share your project. Ask a parent to email a link to bracknell-library@bracknell-forest.gov.uk. Please also include your library card number. For tips and more information about the competition check the library website.

You can find out more about activities happening this summer at Bracknell Libraries at: <https://www.bracknell-forest.gov.uk/libraries/library-events/summer-reading-challenge-events>

Knit and Natter for adults

Join us for a friendly afternoon of knitting and chatting first Monday of the month at 2pm and third Saturday of the month at 1.30pm.

Future dates: Monday 1st August 2pm, Monday 5th September 2pm, Saturday 20th August 1.30pm, Saturday 17th September 1.30pm.

It's free and is a great way to find new friends, share tips and enjoy some company. Prepare your yarn and needles and get nattering!

Anne Hayward

COMMUNITY NEWS



What's been happening at Binfield CE Primary School (V.A.)?

Year 6 residential trip

Our Year 6 pupils and staff had a fantastic week on their residential trip to PGL.

The list of activities that they took part in was endless but to name a few, the children went on the zip wire, built their own buggy, took part in fencing lessons, rode on giant swing, built and launched a raft, climbed a Jacob's ladder and abseiled!



Special Visitor in Year 2

The children were incredibly lucky to have a special scientist visit us, Mr Elkington! He not only had lots of knowledge of reptiles and vertebrates but the actual snakes and lizards came to visit themselves! All of the children could choose to hold or touch the animals and even the teachers joined in. The children discovered that the reptiles were incredibly smooth, soft and cold! We then used this experience to inspire our sculpture work in the afternoon. We used a range of skills to mimic the animal's skin textures.



Reception children make a discovery!

Reception found some strange objects in the BOLE. After writing to our Headteacher Mrs Featherstone-Wright telling her about it, we found out that a local Space Agency were looking for some objects they believed landed in the area. The children have been thanked for their findings and earned a space badge!



Visitors to Binfield Primary

We welcomed some teachers from Lithuania on Wednesday to see our 'Advanced Thinking School' in action. They are part of the international Thinking School group and are on the early stages of becoming a Thinking School themselves. The visitors were treated to lunch and a tour of the school, led by some of our fantastic Y5 and Y6 role models. Before they left, the visitors commented on how wonderful the school is and how confident and informative the children were. We have hosted teachers from various countries in the past and it was great to welcome them back into school again.



Year 6 rocked Binfield!

Year 6 had a fantastic end of year performance of "We will rock you". We were so impressed with their singing, dancing and acting.



Sports News

On Tuesday the 14th of June, we took a group of Year 5 children to the Year 5 & 6 Athletics event at Bracknell Athletics Club. The children took part in a variety of track and field disciplines. The competition was tough, with Year 6 away at their residential, but all Year 5's performed well. We finished outside of the medals - but this puts the children in good stead for next year.



Twitter

All of our news and events are shared daily on our Twitter page. To follow us please search for @Binfieldschool.

COMMUNITY NEWS



BINFIELD GARDEN CLUB

Our July meeting was a little different but very enjoyable. It was a Members' Evening and Ralph started the proceedings with his gardening story and also intrigued us all with why he grows kale and eats some every day. Research showed him that kale contains Lutein and Zeaxanthin, chemicals which are fundamental to the macular which, if it degenerates, causes loss of sight,

Elaine also entertained us with the story of her garden showing some lovely photos.



Members then asked questions and these gave way to discussions re such subjects as getting rid of ants in pots!

We had refreshments and the raffle and the winners of the competition for A Vase of Ravishing red and/or Pink was won by

Ros Hardy with Liz Ferris second and David Ireland third.

Later this month we are looking forward to visiting the large garden of one of our committee members and enjoying tea and cake and plant stalls there too.

Our August 4th meeting will be on Zoom and looks a really fascinating one. Dr Catherine Horwood will talk about Beth Chatto – A Life with Plants. Catherine is a journalist and author and her book on Beth Chatto won the European Garden Book of the Year award in 2020.

Looking further ahead we are delighted to welcome back Darren Lerigo, one of the top topiarists in the country at our September 1st meeting. He will be sharing his fascination with gardens, pruning and wildlife and we have so enjoyed his visits in the past.

The competition that evening is our Annual competition for a Dahlia in a Pot.

A few days after that September meeting we will be off on our first excursion since before Covid to the Wisley Flower Show. This popular trip is fully booked and has a waiting list.

As I write this we are in the midst of a heat wave so good luck everyone with keeping your gardens alive, stay cool and safe.

Any enquiries please ring Ralph on 01189 781480 and check our website binfieldgardenclub.wordpress.com

Visitors and guests are always most welcome at our meetings

Sue Jeffery



ROYAL NAVAL ASSOCIATION BRACKNELL BRANCH UPDATE

As I write this article, we are looking at the start of a heat wave and, dare I say it, a summer season - Wimbledon, strawberries and cream, Pimm's in the garden and time well spent with family and friends, I hope. The Bracknell RNA is no exception - it's a small network of friends with a common admiration for all things Navy, both modern and historic, but most of all, it is friendship and comradeship that draws us together. It was pleasing to see two new members join us this month and we are always open to swelling our ranks, so get in touch - it's never too late.

Another full program this month with Members attending various events including 16 Shipmates at a Memorial Service at Pangbourne College for the 40th Anniversary of the Falkland Conflict. Our Standard Bearer was present at seven events this month including the aforementioned Pangbourne event and one held in Portsmouth also in remembrance of the Falkland's conflict. It was also the time of year for some Shipmates to attend the RNA National Annual Conference. Treated to the likes of a Reception on board HMS Warrior and, something that always makes me proud of my association with the services and that's a fantastic 'Beat the Retreat', performed by the Royal Marine Band.



After the formal meeting and a brief break for refreshments, Shipmates settled down to this month's speaker. It was the turn of Paul Barfield to present "The White Mouse – Nancy Wake".

Paul started by explaining that he had had a service career of 34 years in HM Police service. With a fascinating talk and a series of slides he introduced "Nancy Wake", who had played a vital part in helping the allies defeat the Nazi's and Hitler in WWII. Paul kept the Shipmates gripped to the very last slide. Nancy's autobiography, entitled the 'White Mouse' (which was a name the Nazi gave her), outlining the unknown resistance women supporting the escape of allied airman from France to Spain, was published in 1985 and she sadly passed at the age of 98 in 2011 in Kingston Hospital, Kingston upon Thames having lived throughout her life in Australia, New Zealand, France and the United Kingdom.

For further information about the RNA, please contact our Branch Secretary, S/M June Boddrell at secretary.bracknellrna@gmail.com or by telephone on 01344 311869. We look forward to meeting you soon.

Yours aye S/M Marcus Carpenter

ONCE NAVY, ALWAYS NAVY



CHURCH NEWS



STUBBS HILL CEMETERY - BINFIELD

Many people are unaware that we have a cemetery – separate from the churchyard at All Saints Church – in Binfield. The Parish Cemetery at Stubbs Hill (at the junction of Hill Farm lane and the football club), Binfield was consecrated in

1888 and has been in use for over 100 years. It consists of two areas of land known as the Top and Bottom fields. The Top field is the area that has been used for burials until the beginning of this century and has a gravel-based path that runs around its border.

The Top field is full and the Bottom field has started to be used and is accessed from the Top field either via some steps made from sleepers via the eastern path or down a shallow slope on the western border.

The Lych gate at the entrance to the cemetery has recently been renovated and the paths have been refurbished and extended - see accompanying photos. There is still plenty more to do to repair, refurbish or upgrade facilities, but we would like to celebrate the fantastic work done – despite the pandemic – over the last year or so through the efforts of volunteers and some generous donations.

For this purpose, we have initiated a fun design competition for the Bottom field. We are inviting people of all ages to visit the site and produce a design that could be used to develop the Bottom field. The competition runs from July 20th to the end of August, winners to be announced at the church Fete on September 11th.

Have a look at the before and after photos and then pop down to Stubbs lane and see for yourself. Maybe even get creating and have a go at a design yourself?

Details of the competition can be found in this edition of the Beacon and on the church website and Facebook page.

Tony Muller



Aerial shot of bottom field



View of bottom field from top field



Steps before



Steps after

Cemetery Design Competition

We are looking for the most creative designs for our new space at Binfield Cemetery.

To find out more about this summer project, visit www.binfieldcofechurches.org.uk



Top path and gate before and after



Environmentally aware—The Binfield Beacon is printed in the UK on paper manufactured to ISO14001 standard in a European Mill. The paper is FSC approved, ECF acid and choline free, biodegradable and sourced from a UK Merchant who is part of the Woodland Trust which helps plant more trees to reduce carbon footprint. Printed using vegetable oil based inks. Please do your part to help the environment by passing on your magazine to others or recycling it responsibly. **Thank you.**

Binfield Church Fete 2022

11 SEPTEMBER 2022
ST. MARKS' CHURCH, BINFIELD
11AM - 3PM

TRADITIONAL TEA TENT
FACE PAINTING
DOG SHOW
KIDS GAMES
SILENT AUCTION
MUSIC
BBQ*
BOUNCY CASTLE
STALLS
BAR
TOMBOLAS
PIMMS TENT
CAKES
RAFFLE*

WWW.BINFIELDCHURCHFETE.CO.UK
FACEBOOK.COM/BINFIELDCHURCHFETE
*VEGGIE AND VEGAN OPTIONS AVAILABLE
*RAFFLE TICKETS AVAILABLE FROM CHURCH, THE OFFICE AND THE FOXES' DEN

BINFIELD VILLAGE CALENDAR 2023

PHOTO COMPETITION

Our photo competition is back! Send in your photos of Binfield, and the best 13* selected will feature in the popular annual Binfield Village Calendar

Send photos in by Wednesday 31st August to fundraising@binfieldcofechurches.org.uk

See the church website for full rules and details www.binfieldcofechurches.org.uk

*12 monthly landscapes and 1 portrait front cover

Church Care Project
LOOKING AFTER OUR SPACES FOR THE COMMUNITY

Cemetery Design Competition

We are looking for the most creative designs for our new space at Binfield Cemetery.
If you're Under 11, 12-16 or 16+ we want to see your ideas. You could even win a prize!

To enter, fill out the form and entry sheet and hand it in with your £2 fee online or at the Foxes' Den.
Entries open July 20th '22 and close at midnight on August 31st '22.

To find out more, visit www.binfieldcofechurches.org.uk

Money raised will go to the Church Care Project

SCAN ME

Would you like to Advertise here or somewhere else in the Beacon?

The Binfield Beacon is hand delivered to 3500 houses and businesses in Binfield and shared online and on Facebook

Depending on size, position and colour prices can range from £22 an issue to £120

If interested please...
call 01344 421079 or
email office@binfieldcofechurches.org.uk