

# The Binfield Beacon



Your Binfield Parish Community Magazine - there's lots going on!

## This Month

Binfield Community Centre - page 13

Party Bye the Pitch - page 14

Father's Day BBQ - page 16

May 2024



**Be thankful  
for that one  
working oar**

Images by Gaertringen and Shujonmoral from Pixabay

**Our mission is connecting people with Jesus the Bible and Others.**

Church Office: 01344 421079 [office@binfieldcofechurches.org.uk](mailto:office@binfieldcofechurches.org.uk) [facebook.com/allsaintswithstmarks](https://facebook.com/allsaintswithstmarks)  
[www.binfieldcofechurches.org.uk](http://www.binfieldcofechurches.org.uk) Produced by All Saints' with St Mark's Churches

# SERVICES & DIARY

## SERVICES

*(All Services are held at All Saints' Church unless specified)*

### MAY 2024

**Sunday 5<sup>th</sup>** 8.15am Book of Common Prayer Communion  
9.30am Common Worship Communion  
11.00am Informal All Age Baptism Service

**Sunday 12<sup>th</sup>** 9.30am Common Worship Communion  
11.00am Informal Service

**Sunday 19<sup>th</sup>** **8.30am** Common Worship Communion  
*(said only, no hymns)*

**Sunday 26<sup>th</sup>** 9.30am Common Worship Communion  
11.00am Informal Service

### JUNE 2024

**Sunday 2<sup>nd</sup>** 8.15am Book of Common Prayer Communion  
9.30am Common Worship Communion  
11.00am Informal All Age Baptism Service



## Creative Table

*(for Pre-school and Reception year children)*

*The creative table is available during the 11am service every Sunday (except on the first of the month) for younger children to use during the service.*

## PRACTICE THE PRESENCE OF GOD

This month's Practice the presence of God session takes place on **Tuesday 21st May, 7.30pm at The Rectory**

This is a time to be still and to practice listening to God and learning to recognise how he speaks to you.

## WEDNESDAY WOMEN'S WALK

A gentle 2-3 mile walk (which takes about an hour) in and around Binfield village, for women of mixed ages and abilities. Usually on the 1st and 3rd Wednesday of the month.



The walks go ahead in all weathers and normally start at 9am from outside Foxes' Den Café and finish there around 10am for a coffee.

**1st May - 9am meet Foxes' Den**  
**15th May - 9am meet Foxes' Den**  
**5th June - 9am meet Foxes' Den**

For more information contact:  
Gisele on  
07724 889169

## MEN'S MONTHLY COUNTRY WALK

**DATES: Saturday 4th May and 1st June**

The Men's Monthly Walk takes place on the 1st Saturday of each month. We start at 7.45am from the car park at Oakmede Shops.

The walk lasts approximately 1 hour.

Be ready for all weathers!

**For more information contact Kim Swain on 07894 469633 or [kimswain@pm.me](mailto:kimswain@pm.me)**

## THE SILVER SERVICE

A traditional short service designed and led by our retired congregation members followed by a delicious homemade lunch at St Mark's Church.

**Tuesday 21st May at 12 noon**

*If you need a lift, please call Beverley on 07704 437207*

## DIARY

### MAY 2024

<b>Wed 1<sup>st</sup></b>	9.00am	Wednesday Women's Walk
	10.00am	3G Toddler Group at St Mark's Church
	7.00pm	7UP at St Mark's Church
<b>Thurs 2<sup>nd</sup></b>	7.30pm	Adult Choir practice at St Mark's Church
<b>Fri 3<sup>rd</sup></b>	8.00pm	Relentless at St Michael's Church, Warfield
<b>Sat 4<sup>th</sup></b>	7.45am	Men's Monthly Walk
<b>Wed 8<sup>th</sup></b>	10.00am	3G Toddler Group at St Mark's Church
	7.00pm	7UP at St Mark's Church
<b>Thurs 9<sup>th</sup></b>	7.30pm	Adult Choir practice at St Mark's Church
<b>Fri 10<sup>th</sup></b>	8.00pm	Relentless at St Michael's Church, Warfield
<b>Sun 12<sup>th</sup></b>	10.45am	Whizz Kids at St Mark's Church
<b>Wed 15<sup>th</sup></b>	9.00am	Wednesday Women's Walk
	10.00am	3G Toddler Group at St Mark's Church
	7.00pm	7UP at St Mark's Church
<b>Thurs 16<sup>th</sup></b>	7.30pm	Adult Choir practice at St Mark's Church
<b>Fri 17<sup>th</sup></b>	8.00pm	Relentless at St Michael's Church, Warfield
<b>Tues 21<sup>st</sup></b>	12 noon	Silver Service at St Mark's Church
	7.30pm	Practice the presence of God at The Rectory
<b>Wed 22<sup>nd</sup></b>	10.00am	3G Toddler Group at St Mark's Church
	7.00pm	7UP at St Mark's Church
<b>Thurs 23<sup>rd</sup></b>	7.30pm	Adult Choir practice at St Mark's Church
<b>Fri 24<sup>th</sup></b>	8.00pm	Relentless at St Michael's Church, Warfield
<b>Thurs 30<sup>th</sup></b>	7.30pm	Adult Choir practice at St Mark's Church

### JUNE 2024

<b>Sat 1<sup>st</sup></b>	7.45am	Men's Monthly Walk
<b>Wed 5<sup>th</sup></b>	9.00am	Wednesday Women's Walk
	10.00am	3G Toddler Group at St Mark's Church
	7.00pm	7UP at St Mark's Church
<b>Thurs 6<sup>th</sup></b>	7.30pm	Adult Choir practice at St Mark's Church



3G, a group for babies and toddlers, meets **every Wednesday during term time.**

**From 10am to 11.30am at**

**St Mark's Church on Popeswood Road, Binfield.**

### DATES:

**1st, 8th, 15th and 22nd May and 5th June**

Come and join us for lots of fun, with toys, a story and singing plus refreshments for the little ones as well as the adults. It is an opportunity for everyone to make new friends.

You are assured of a warm welcome. **Christine White and Team**

**7UP**

For anyone in school years 7-13

A café style chill space! With games, sports, tuck shop and creative zone!

**WEDNESDAY EVENINGS, ST. MARK'S CHURCH, 7:00-8:30PM**

**RELENTLESS**

A joint youth group with Warfield Church! Enjoy video games, sports and space to hang with friends

**FRIDAY EVENINGS, ST. MICHAEL'S WARFIELD, 8:00-9:30PM**

For school years 1-6

Everyone welcome!

**SUNDAYS** Except the first of the month!

St. Mark's Church 10:45AM

**WHIZZ KIDS!**

JOIN US AS WE LEARN HOW TO FOLLOW GOD!

With stories from the bible.

sports, craft, games and more...

[daisyridell@gmail.com](mailto:daisyridell@gmail.com)

# A MESSAGE FROM YOUR RECTOR



## LIFE IS ABOUT PERSPECTIVE

The actor Jackie Chan was once asked, 'Jackie are you happy with your life?' His answer left people speechless.

The difficult job you complain about is the dream of someone who is unemployed.

The mischievous child that tests your patience is the dream of the childless.

The small house you think is too cramped is the dream of someone who is homeless.

The modest saving you worry over is the dream of those drowning in debt.

The health issues you consider burdensome are the dream of someone fighting a terminal illness.

The fact that your mistakes are not on display for the world to see is the dream of those haunted by their past.

We must be grateful for everything we have.

As another wise teacher once said, ***It is better to see what you have than to want more. Wanting more is useless, like chasing the wind. Ecclesiastes chapter 6 verse 9. (NCV)***

Pray that you can see what you have.

Illustration taken from Instagram. Wiselevation

**Luke Taylor**



## From the Registers:



## Baptism

Emily Rose Alice Knight

## MAY VERSE OF THE MONTH

“You will keep in perfect peace  
all who trust in you, all whose  
thoughts are fixed on you.”

ISAIAH 26:3

Contributed Jan Watts

## EASTER CAROL SERVICE

*A good congregation enjoyed the first Easter Carol Service for several years in St Mark's on Easter Sunday in the evening. The choir of 11 singers, accompanied by 2 organists, sang 4 anthems and led the singing of Easter hymns, interspersed with Bible readings celebrating the Risen Christ.*



## Ascension Day - 9th May

On Thursday 9th May, Ascension Day, the Choir will be singing Ascension hymns as usual at **6.30.am** at All Saints Church.

Those who can will climb the tower, but others will choose to sing outside the porch.

All are welcome and a full English breakfast will be served afterwards at Beehive Cottage.

# CONTACT US: 01344 421079 [office@binfieldcofechurches.org.uk](mailto:office@binfieldcofechurches.org.uk)

**Rector:**

Revd Luke Taylor  
07939 526361  
[rector@binfieldcofechurches.org.uk](mailto:rector@binfieldcofechurches.org.uk)  
(Friday is Luke's day off)

**Churchwarden:**

John Hargreaves - 07973 842624  
Sue Cledwyn-Davies - 07941 585488

**Church Office:**

Hayley Fourie, Administrator  
**Office number 01344 421079**  
[office@binfieldcofechurches.org.uk](mailto:office@binfieldcofechurches.org.uk)

**Office opening hours:**

Tuesday: 9.00am - 1.00pm  
Wednesday: 9.00am - 1.00pm  
Thursday: 9.00am - 1.00pm

**Children's and Youth Worker:**

Daisy Osinaike  
[youth@binfieldcofechurches.org.uk](mailto:youth@binfieldcofechurches.org.uk)

**Binfield Beacon Editor:**

Claire Thomas  
[beacon@binfieldcofechurches.org.uk](mailto:beacon@binfieldcofechurches.org.uk)

**P.C.C. Secretary:**

Kate Hayes  
07809 736372

**Organist & Choirmaster:**

Michael Hawkins  
01344 411681

**Bell Tower Captain:**

Jan Glen  
07840 104455

**Treasurer:**

Sarah Muller  
01344 428782  
[Treasurer@binfieldcofechurches.org.uk](mailto:Treasurer@binfieldcofechurches.org.uk)

**Stewardship Secretary:**

Andrea White  
01344 421079

**Fundraising Team**

[fundraising@binfieldcofechurches.org.uk](mailto:fundraising@binfieldcofechurches.org.uk)

**Church Website:**

[www.binfieldcofechurches.org.uk](http://www.binfieldcofechurches.org.uk)



We are also on Facebook  
[facebook.com/AllSaintsWithStMarks](https://facebook.com/AllSaintsWithStMarks)

The Church Office is sited in St Mark's Church

**St Mark's Church**

Popeswood Road  
Binfield RG42 4AH

**All Saints' Church**

Church Hill  
Binfield RG42 5NS

**Join our mailing list!**

Stay up to date with our news and events in between issues of the Beacon...

Scan this QR Code,  
or visit our website to sign up  
and see our Data Privacy Notice



[www.binfieldcofechurches.org.uk/contact-list-sign-up/](http://www.binfieldcofechurches.org.uk/contact-list-sign-up/)

## Pastoral Care Visiting Team - need a friend?



In All Saints' and St Mark's Churches we have a small pastoral care team who are happy to visit and befriend the people of Binfield. So, if you have recently moved to the area and don't know many people; if your family live far away; if you are a Mum at home with a baby and would like adult company; if you find it difficult to get out or just fancy a friendly chat over a cup of tea, please get in touch with one of us. You don't need to be a member of the church, just enjoy some company occasionally!

<b>Jill Hanson</b>	<b>tel. 452694</b>
<b>Margareta Hawkins</b>	<b>tel. 411681</b>
<b>Gisele Taylor</b>	<b>tel. 07724 889169</b>
<b>Dave Dawson</b>	<b>tel. 360389</b>

Or contact the church office on 01344 421079  
or email [office@binfieldcofechurches.org.uk](mailto:office@binfieldcofechurches.org.uk)



## Bereavement Support Team

We will all suffer loss, grief or bereavement at some time in our lives, mainly through death, but also in other ways such as relationship breakdown, loss of a job, or sudden disability. The Bereavement Support Team are not counsellors, but can offer support and companionship if you are suffering a loss of any kind. There is no charge for a visit. All support team members have ID badges.

**Friday Morning Bereavement Group Coffee Morning**

**Foxes' Den Café on Fridays 10.30am – 11.30am**  
(term time only)

Peer to Peer support open to anyone dealing with grief. It is not a counselling group, just a friendly get together over a drink.

If you would like to talk to a member of the team, in confidence, please contact Liz Hall for more information [orinocco@hotmail.co.uk](mailto:orinocco@hotmail.co.uk) /07850 799434 or Margareta Hawkins 01344 411681



### St Mark's Church Hall Available for booking.

Please contact the church office on 01344 421079 or email [office@binfieldcofechurches.org.uk](mailto:office@binfieldcofechurches.org.uk) for more information or to make a booking.



### Praying for and with you

We have weekly prayer sheets — please email [office@binfieldcofechurches.org.uk](mailto:office@binfieldcofechurches.org.uk) if you would like something to be included.



## The Binfield Beacon

### The deadline for Beacon Contributions for the June 2024 issue

is **Monday 13th May 2024**

Please email:

[Beacon@binfieldcofechurches.org.uk](mailto:Beacon@binfieldcofechurches.org.uk)  
Claire Thomas (Binfield Beacon Editor)

**PLEASE NOTE:** The articles in this magazine reflect the personal opinions of the writers and not necessarily those of the Editor or Editorial Team. Furthermore the Editorial Team are not responsible for any errors of fact printed in the magazine. Goods and services advertised in this magazine are not endorsed but readers utilising these facilities retain their statutory rights. The Binfield Beacon is produced by The Parochial Church Council of the Ecclesiastical Parish of Binfield. Registered Charity number 1149382

# CHILDREN, YOUTH AND CHURCH



Hey Everyone!

We hope you had a great Easter break celebrating with lots of chocolate and time spent with loved ones. Here's what's been going on with our groups over the last month...

At Whizz Kids we finished learning about what God says love is in 1 Corinthians 13, and we've been practicing being patient, forgiving others and doing the right thing. We also had a mini Easter egg hunt at St. Mark's to finish our Spring term in style, followed by our annual huge Easter egg hunt at All Saints' on Easter Sunday! Luckily, the rain held off and we had a fabulous morning searching the grounds for some hidden eggs after our All Age service.



Our 7UP youth have been busy baking, as they held a bake sale to help raise money for a bus for our trip to Satellites this Summer. They did an amazing job making lots of yummy treats, and managed to raise £152.16 for our transport!

We will be holding a water station for the Binfield 10k race again this year down at All Saints', so if you're running the race we will see you down at the Church with water, jelly babies, and some great music from the Rock Choir.

Coming up in June we are having our Father's Day BBQ again on the green outside the Foxes Den, with a bouncy castle and some great food, it will be great to see you there!

We hope you have a wonderful Month,

**Daisy Osinaike -**  
**Children's and Youth Worker**  
**([youth@binfieldcofechurches.org.uk](mailto:youth@binfieldcofechurches.org.uk))**

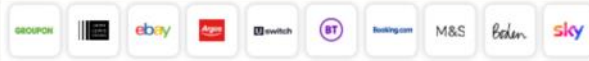


**The dates for May are:**  
 Whizz Kids: 12th May  
 7UP: 1st, 8th, 15th, 22nd May  
 Relentless: 3rd, 10th, 17th 24th May



**Environmentally aware**—The Binfield Beacon is printed in the UK on paper manufactured to ISO14001 standard in a European Mill. The paper is FSC approved, ECF acid and chorine free, biodegradable and sourced from a UK Merchant who is part of the Woodland Trust which helps plant more trees to reduce carbon footprint. Printed using vegetable oil based inks. Please do your part to help the environment by passing on your magazine to others or recycling it responsibly. **Thank you.**



# FUNDRAISING NEWS



Support us through **easyfundraising**

Please remember to use **easyfundraising** every time you shop online! Over 7,000 brands will donate, so you can raise FREE donations for us no matter what you're buying. These donations really help us out, so please sign up if you haven't yet. It's easy and FREE and funds go to our Church Care Project!

Scan the QR code to the right, or get started at:  
[www.easyfundraising.org.uk/causes/binfieldpcc/](http://www.easyfundraising.org.uk/causes/binfieldpcc/)


**The Church Care Project:**  
 Funding large building projects and ad-hoc maintenance work on our church spaces



**General Funds:**  
 Supporting the ongoing costs of running our churches and services, including the Parish Share payment and Youth work

## PLANT SALE

**Saturday 25th May until Monday 27th May 2024**

at The Foxes' Den Cafe, Binfield  
 (during opening hours)




Donations of plants and seedlings still very welcome!  
[www.binfieldcofechurches.org.uk](http://www.binfieldcofechurches.org.uk)

## The BINFIELD 10K

**Helpers Needed!**



We'd love to have some helpers join us while we support this huge village event on Sunday 19th May.

If you'd like to get involved at our water station at All Saints' or on the BBQ on Foxley Fields, please get in touch!

**Update**

It's May and time for sunnier weather (finally, we hope) and some fundraising!

First off is the **Binfield 10k**, the fantastic community event which we are happy to be involved with again, both hosting our water station at All Saints' and running the BBQ to provide the all important pre-race marshal treats and post race burgers! If you'd like to join in at either location, we'd love to see you there.


Our **Plant Sale** is on during the beginning of May Half Term at the Foxes' Den Café. Please come along and see what's on offer. We would still gratefully receive any plants or seedlings of flowers, fruits or vegetables to sell and help us raise funds for the Church Care Project.

Thanks as always for your continued support, we truly appreciate your help with our efforts to keep our church spaces running!



**How to make a donation:**

We would really appreciate your donation; however big or small, it will all help!

- **Online:** see our updated 'Giving' pages on the website, with easy links to make a one-off donation: [www.binfieldcofechurches.org.uk/giving-page](http://www.binfieldcofechurches.org.uk/giving-page) or click on the 'Donate' link on the Home Page.
- **Cheque:** send a cheque to the church office, made payable to "Binfield PCC". Please write 'Church Care', 'General Funds', or where you would like your donation used on the back
- **BACS:** Name: Binfield PCC, Account Number: 80175528, Sort Code: 20-11-74. Please add **your name + a reference** (as above) if you would like to specify where your donation goes.



Don't forget to **Gift Aid** it if you are a UK Tax Payer - this will add an extra 25% to your donation!  
 Contact the church office for more details, or see the church website more information and other ways to raise money!

With many thanks from the Fundraising Team:  
[www.binfieldcofechurches.org.uk](http://www.binfieldcofechurches.org.uk)

[fundraising@binfieldcofechurches.org.uk](mailto:fundraising@binfieldcofechurches.org.uk)  
[www.facebook.com/AllSaintsWithSt.Marks](https://www.facebook.com/AllSaintsWithSt.Marks)

## COMMUNITY NEWS



### BINFIELD LIBRARY MAY NEWS

Hi everyone, we really enjoyed participating in the Easter egg hunt and I think Peppa might stay a bit longer at Binfield Library just like Bluey did, what do you think? She certainly liked all the attention she got.

I hope you are all enjoying the light evenings and taking full advantage; there really is nothing like a glorious walk in the evening sun to the library, picking a good book and spending a relaxing time in the garden reading it, bliss.

Open+ is going from strength to strength with many of our customers now finding the flexibility appealing to their hectic lifestyles so if you don't want FOMO come in and we will take you through the induction process so that you have access to the extended opening times.

#### Weekly events:

**Rhyme Time** sessions continue for preschool children every Thursday at 9.30am, a small 50p charge applies, this group is followed by a craft activity (£1.50 charge if your child stays for both the singing and the craft).

The **After-School Craft** session on a Friday starts at 3.30pm, this event needs to be booked so we can make sure we have enough resources for everyone, there is a small charge.

#### Every other week:

The **Reminiscences Group** is the first and third Thursday of the month at 11.00. This group is steadily growing so if you're interested in discussing your memories new members are very welcome. There is a small charge of £1 to include tea or coffee.

**Derek's Quiz** well what can I say, you really do need to experience it, come, and see for yourself – second and fourth Thursday of the month at 11 am, £1 charge.

#### New to Binfield Library

Binfield Board games including Saturday Scrabble. Every Saturday from 2 – 3.30pm, release your inner competitive streak people. It's free and fiendishly fun.

#### Coming soon!

With summer quickly approaching it'll soon be time for the yearly Summer Reading Challenge; to take part you'll need to be a member of the library, just visit us with photographic ID and we can join you straight away and it's FREE!

For more details of library events please go to [www.bracknell-forest.gov.uk/libraries](http://www.bracknell-forest.gov.uk/libraries), find us on facebook and twitter or call 01344 306663.

*Sar Henty and the Binfield library team*

## The **BINFIELD** 10K

Foxley Fields, Binfield, RG42 4EW  
10am **SUNDAY 19th MAY**

### Run/Jog/Walk

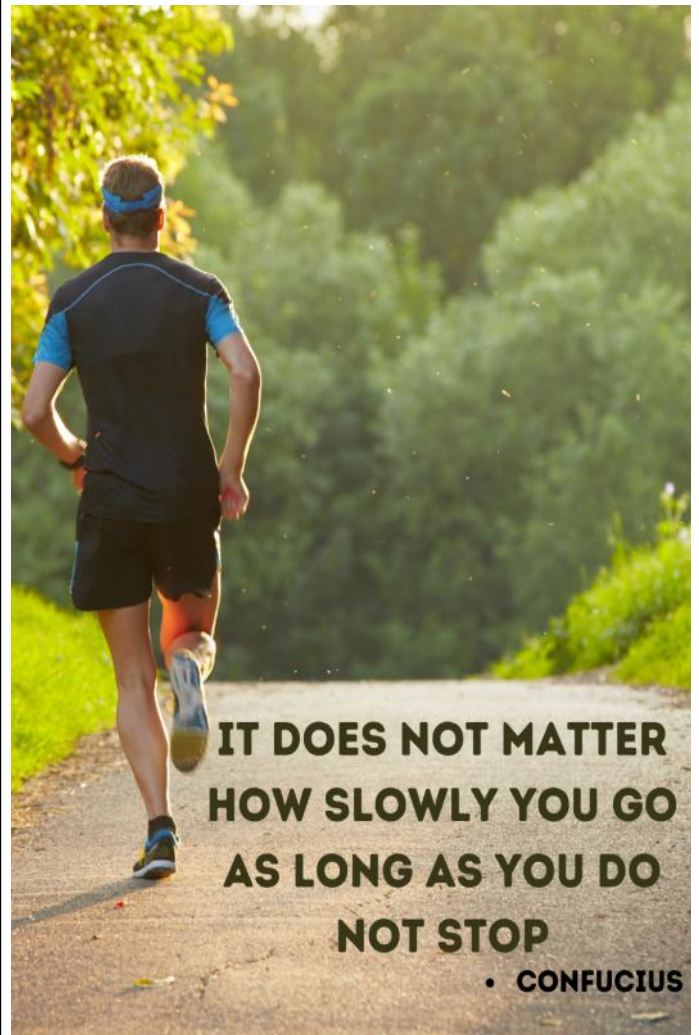
*Last few places still available*

Marshals needed:

[volunteer@binfield10k.co.uk](mailto:volunteer@binfield10k.co.uk)

Huge thank you in advance to all the locals on the route for moving your vehicles and to everyone for your support

[www.binfield10k.co.uk](http://www.binfield10k.co.uk)



*Boiler & Heating Problems?*  
**Family Run Established Local Company**

**DRAYTON BOILER SERVICES**

New Installation  
Emergency Repairs  
Maintenance & Upgrades

Service, Repair & Installation

Over 60's Discount On a New Boiler

With over 25 Years Experience

Vaillant WORCESTER Bosch Group ideal Stelrad POTTERTON BAXI

**Binfield 01344 669885**

www.draytonboilerservices.co.uk 234399



*Plus Three Nurseries*  
 where learning is fun

**Plus Three Nurseries Ltd**  
 Farley Wood & Martins Heron

**FREE Soft Play**  
**FREE Toddler Yoga**

**FREE SPACES AVAILABLE FOR IMMEDIATE START**  
 Registered for children from 18 months.

To receive a prospectus and arrange a visit to the nursery, call Sue Butler on 07970 030769

www.plusthreenurseries.com  
 Email: plusthreenursery@aol.com

**Woodchips Ltd**  
 Tree surgery

Checkatrade.com  
 Where reputation matters

Family run business in Harmans Water, Bracknell  
 Fully Insured • NPTC Qualified • 10+ years experience

- Tree felling, reducing, reshaping and maintenance
- Stump grinding
- Hedge trimming and maintenance
- All green waste recycled

FREE QUOTATIONS AND ADVICE

COMPETITIVE PRICES

01344 425733 or 07867 523823  
 jose@woodchipsltd.co.uk www.woodchips.org.uk



**G. SIBLEY REMOVALS**

*We live in Binfield!*  
 From one item to whole house  
 Flat & Office  
 Collection & Delivery  
 All Clearances Undertaken  
 No job too big or too small  
 FREE QUOTE

**01344 424367 / 07886557025**  
 garysibley67@yahoo.co.uk



**DANCE**  
**DANCE**  
**DANCE**

Ballet (RAD)  
 Modern Theatre (ISTD)  
 Tap (ISTD)  
 Contemporary (ISTD)  
 Acrobatic Arts (BATD)  
 Adult Ballet  
 Adult Tap

Classes held at:  
 The Farley Wood Centre  
 Binfield RG42 1FW  
 07944 394097 / 0118 989 2531



*Lynnette Stephenson*  
 Academy of Dance

**Abacus**  
 TUTORS OF WOKINGHAM

**Primary and Secondary & University tuition**  
 Key Stage exams, Common Entrance and 11+ Tuition,  
 Non-Verbal Reasoning tests, GCSE, IB, AS and A-levels.

Tutors are available for many subjects and levels:

Established in 2002 **01344 862286**

All Tutors DBS checked [www.Abacustutors.co.uk](http://www.Abacustutors.co.uk)  
 New Tutors are always welcome

**Landmark Tree Surgery**

'Berkshire's Best Kept Secret'  
 (Homes and Gardens 2017)

For the most professional and trusted tree care company  
 Established for over 30 years  
 We live in Binfield!

Call Mark 07860 812542 / 01628 630071  
 info@landmarktreesurgery.co.uk  
 www.landmarktreesurgery.co.uk







## In Your Home Ltd

Personalised support at Home.

Do you need assistance with everyday tasks, or are you struggling to support a loved one to continue living at home?

We are a local independent Domiciliary Care Agency. We can assist with all aspects of elderly or disabled care. This includes:-

Personal care including baths & showers • Dressing  
Meal preparation • Assistance with Eating  
Medication Administration • Shopping • Housework  
Laundry • Sitting Service • Health Visits • Social Visits

Our staff are trained to a high standard. Clients have a personalised care-plan and we hold regular review meetings with all clients.

For more information, & to discuss your requirements, call us on:- 01344-567675 (08:00 - 20:00) or see our web-site: - [www.ciyh.co.uk](http://www.ciyh.co.uk)

Care In Your Home Ltd  
Premier Gate, Easthampstead Road  
Bracknell, Berks, RG12 1JS



### CONSTRUCTION SERVICES:

#### LOFT EXTENSIONS

Maximize your home's potential, add value and create a stylish haven.

Whether it's a new bedroom, home office, or play area, upgrade your space with **FAIDEN CONSTRUCTION**.



✉ [admin@faidengroup.com](mailto:admin@faidengroup.com)

☎ 020 3961 6800

🌐 [faidencorstruction.com](http://faidencorstruction.com)

## iClean

Domestic and Commercial  
Professional Cleaning Services



- ✦ Regular domestic cleaning
- ✦ Ironing
- ✦ Housekeeping:  
live in or live out



Call Ruth or Elena  
01344 481993  
07828 052846  
[info@iclean-home.co.uk](mailto:info@iclean-home.co.uk)

[www.iclean-professional-services.com](http://www.iclean-professional-services.com)



# Tall Oaks

01344 568 779

[info@talloakscontractors.co.uk](mailto:info@talloakscontractors.co.uk)

[talloakscontractors.co.uk](http://talloakscontractors.co.uk)

- Arboricultural Services
- Drainage
- Grounds Maintenance
- Groundworks
- Landscape Construction
- Fencing

We'd love to help you keep your trees healthy, your grounds looking naturally beautiful and your workplace or local area operating seamlessly with the greenery around it.

Contact our specialist team now to arrange a free, no-obligation quote – or to ask any questions you may have about Tall Oaks and our services.

## Binfield Landscaping & Fencing

Based in Binfield, with 20+ years experience, professional, reliable & friendly landscaping service

- Patios & Pathways
- Fencing & Gates
- Pergolas & Sheds
- Turfing
- Raised Beds
- Landscape Design

For a free quote call

Andy 07956137466 or Jack 07888703499

Email – [BinfieldLF@gmail.com](mailto:BinfieldLF@gmail.com)

Facebook – Binfield Landscaping & Fencing

## Would you like to Advertise Here

If you are interested please call

**07719 545292**

or email

[office@binfieldcofechurches.org.uk](mailto:office@binfieldcofechurches.org.uk)

## FOXLEY GARDENS

Landscape Restoration & Construction Services

WEEKLY GARDENING  
MOWING SERVICE  
TREE SURGERY  
HEDGE CUTTING  
BORDER PRUNING  
WEEDING & DIGGING  
PLANTS & MULCH  
AND MUCH MORE

CALL JAMES 07752 065192  
E: FOXLEYGARDENS@LIVE.COM



We offer:

- Hedge Cutting
- Spring tidy ups
- Power washing
- Lawn care

Contact us on:  
07809892509  
nonsuchgardenservices@gmail.com

## D.B Roofing



Accomplished Craftsmen  
With A Wealth Of Experience

- Tiling And Slating
- Lead Work
- Flat Roofs
- Re Roofs
- Re Pointing
- General Roof Maintenance
- Free Estimates
- All Work Guaranteed



Call For A Friendly And  
Affordable Service On

**01344 453 732**  
**07799 037866**

## ALAN WARD PAINTER AND DECORATOR

Local decorator  
with 30 years experience

Internal and Exterior  
Painting and Decorating Services

For a free estimate with **NO** VAT  
please call:

Tel : 01344 442402  
Mobile : 0753 9640482  
Email: a-ward@live.co.uk

## i.Plumber PLUMBERS & DECORATORS

Showers, Baths, Sinks, Repairs,  
Cylinders, Immersions, Taps,  
Washers, Pumps, Bathroom Suits,  
Toilets, Basins and Radiators fitted.

Full interior and exterior  
decorating.

Reliable and clean.

Find us on Facebook.

[i.plumber@btinternet.com](mailto:i.plumber@btinternet.com)

Phone 07708602442

## HEATcare

HEATING & PLUMBING SPECIALISTS

- BOILER SERVICING, REPAIRS & INSTALLATIONS
- CENTRAL HEATING REPAIRS & INSTALLATIONS
- GENERAL PLUMBING SERVICES
- POWER FLUSHING
- GAS HOB AND COOKERS
- LANDLORD CERTIFICATES
- ALL WORK GUARANTEED AND INSURED

SAME DAY EMERGENCY CALL OUT

T. 01344 884080

M. 07860 159812

INFO@HEATCAREBERKSHIRE.CO.UK



WWW.HEATCAREBERKSHIRE.CO.UK

## BINFIELD CHIROPODY

- Fully qualified and insured
- Modern fully equipt surgery
- Ample free parking

HELENA GOLD  
Tel: 01344-459371



Domestic Appliance Sales & Repairs

01344 423755

Geoff & Heather Tibble

Foxley Lane, Binfield

[sdas.binfield@btinternet.com](mailto:sdas.binfield@btinternet.com)

## 24-7 COMPUTER DOCTOR

No Fix, No Fee

No Callout Fee



We come to you on demand  
Any I.T. problem solved  
remote support

07915 077227 Support@247ComputerDoctor.com

[www.247ComputerDoctor.com](http://www.247ComputerDoctor.com)



## SEAMSTRESS

Bespoke curtains, blinds,  
cushions, etc

Clothes alterations

School PE kit monogramming

Name taping for school clothes

...the list is endless!

All types of sewing undertaken

Please contact Alison Collett:

07876 591 411  
or 01344 455301

## Thames Valley Will Services

4 Dunley Villas, Binfield, RG42 4HE

tel: 01344 641885 or

e-mail: [twills@yahoo.co.uk](mailto:twills@yahoo.co.uk)

PROFESSIONAL HOME VISIT SERVICE

For Wills, Pre-paid Funeral Plans,

Lasting Powers of Attorney,  
Executor and Probate Service.

Free no-obligation consultation  
Appointments at any time

Visit: [www.twills.com](http://www.twills.com) and  
[www.buywithconfidence.com](http://www.buywithconfidence.com)

## Miles & Daughters Funeral Directors

Proudly serving the local community

- 24-hour service
- Bereavement advice
- Transparent pricing
- Private chapel of rest
- Floral tributes
- Memorial masonry
- Home visits
- Prepaid funeral plans

**Binfield**

**01344 452 020**

Ivydene House, Forest Road  
RG42 4HP

Call us for immediate  
support, advice or to  
arrange a home visit.  
We are here to help  
24 hours a day.

Offices also in Winnersh, Reading, Twyford,  
Crowthorne, Maidenhead and Tadley

[www.milesfunerals.com](http://www.milesfunerals.com)



## MAY ECO CHURCH WATCH

May is the month of Mental Health Awareness. As I expect many of you know, Mind is focusing on being active to support a healthy mind from the 13<sup>th</sup> to 19<sup>th</sup> May. Their symbol is 'Wear it Green Day', green being the international colour for hope, strength and support for people living with mental illness. Support Mind by wearing green and helping raise awareness and funds to promote positive mental health.

How to keep active to support your mind this May? Warmer and longer days will see me digging the garden and, in the evening, watching out for bats at sunset. There is something magical about watching them swoop and dive after insects. Unfortunately, some people mistakenly still perceive them as pests, but bats are our friends as they eat loads of mosquitoes, midges and flies. A common pipistrelle may consume 3,000 biting insects a night. There is just something so relaxing and peaceful about watching such a tiny, busy creature as the light fades and traffic sounds decrease.

Where to watch bats? Besides your garden, local parks and woodlands are good areas to see them flying. They leave their roosts to dine and we can help by providing bat-friendly gardens and community areas. The most effective way to support bats is to plant flowering plants, vegetables, trees and shrubs to encourage a diversity of insects. The Bat Conservation Trust recommends planting night-scented flowers such as evening primrose, cherry pie or Michaelmas daisies to attract night-flying insects for bats to feast on. They also suggest not being too tidy and letting your garden grow on the wild side and creating a compost heap or a log pile to encourage insect larvae. If you have a hedge or tree line in your garden or community area it can help bats navigate.

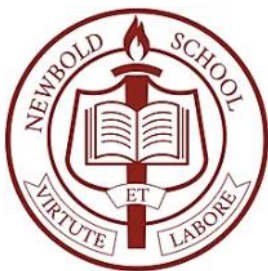
May flowering wild flowers which benefit insect pollinators, and insects that benefit bats, include red campion and dandelions. The Royal Horticultural Society promotes dandelions in our gardens as they increase biodiversity. Herbs also attract insects as well as being useful in the kitchen. One that is often neglected is Sweet Cicely with its frothy white flowers and aniseed scented foliage. It flowers from April to June and, therefore, attracts spring and early summer insects. The leaves can be used to make herbal tea, which taste of aniseed or liquorice, and it adds flavour to salads, both savoury and fruit. The seeds are nutty and are delicious in biscuits.

Enjoy the scent from the May flowers, the warmth of the sunshine, the bird songs and the swooping bats, Nature's remedy for improving mental health.

*Kate Ellison-Bourne*



## NEWBOLD SCHOOL STUDENTS UNVEIL ANCIENT EGYPTIAN WONDERS AT IMMERSIVE EXHIBITION



On Tuesday, March 26th, 2024, Newbold School's Year 3 and 4 students transformed the Newbold Church cafe into an immersive Ancient Egyptian exhibition, guided by Mrs. Maria Gogarty and Mrs. Charlotte Turner. Dressed as Egyptians, the young scholars brought the wonders of this ancient civilization to life.

Meticulously crafted dioramas depicted the pyramids and death masks, while hieroglyphic displays unveiled the secrets of their written language. A food station offered visitors a taste of traditional cuisine with explanations.

The Deputy Mayor of Bracknell, Mrs. Jenny Penfold, commended the students' professionalism. Proud parents witnessed their children's achievements, a testament to Newbold School's commitment to hands-on learning.



# COMMUNITY NEWS



## News from Binfield Parish Council



Welcome to the May 2024 edition of Binfield Parish Council News. In this edition, we are looking forward to our upcoming events over the spring months as well as sharing the latest Parish news.

### May 2024

Tuesday 14 May	Parish Council	8pm
Tuesday 28 May	Planning and Transportation Committee	8pm

### Future Events

Saturday 18 May <b>Binfield Community Litter Pick</b>	As part of the Binfield 10K weekend there will be a community litter pick to tidy the route in advance of the run on Sunday 19 <sup>th</sup> May. Register at the Foxes' Den and pick up a kit.	10am-12 noon Foxes' Den
--	--	----------------------------

### • Annual Parish Meeting

Thank you to all of you who attended the recent Annual Parish Meeting at the new Binfield Community Centre, Wood Lane. Draft minutes will be published on our website along with the agenda and reports booklet. We do have additional copies to pick up from outside our Office along with information leaflets on the new Binfield Community Centre.

### • Congratulation to the 2024 Parish People Awards winners!

Congratulations to those who were recognised for their community spirit and dedicated years of voluntary and community service to the Parish of Binfield.

### Awards winners

**Stuart Wharphshire**, in recognition of your dedicated service to the community over several decades. Your support as a school governor, involvement in church life and other charities is much appreciated by the parish.

**Sharon Tuck**, in recognition of your unassuming service and tireless commitment to the community over many years and your organisation of varied events to help so many individuals who have little support.

**Jane Figg**, in recognition of many years; association with the Bracknell Macular Support Group, Royal British Legion and other charities where your loyal and constant service to the parish has demonstrated your strong community spirit.

### Special Award

**Steve Webb**, in recognition of your work for the parish council for ten years and continuing volunteering for a further five years. Your exceptional problem solving, and practical skills have saved the council money and time -and your diligence, cheerfulness and conscientious regular service has been so much appreciated by the Council and staff.

### • D-Day – Thursday 6 June



This marks the International 80<sup>th</sup> Anniversary of D-Day. There will be a Beacon lighting on Foxley Fields at 9.15pm in celebration of the "light of peace". Please do come along with your friends and family and honour this occasion. We will be communicating more details on the event over the next month.

Further details can be found [www.d-day80beacons.co.uk](http://www.d-day80beacons.co.uk)

- If you have a special community event coming up and you would like some help raising awareness, please contact us on [office@binfieldparishcouncil.gov.uk](mailto:office@binfieldparishcouncil.gov.uk) and we can help publicise your event.

# COMMUNITY NEWS



## News from Binfield Parish Council



**Binfield Community Centre, Wood Lane, Binfield,  
Berkshire, RG42 4EX**

*"support the local community with assets, activities and opportunities to promote people's health, happiness and well-being"*

Construction of the net zero centre began in March 2022 and was completed early in 2023. The building was a collaboration between Bracknell Forest Council and Frimley Health and Care ICS who worked in partnership with Binfield Parish Council, Binfield GP Surgery and Osborne to create a community hub that would provide two key functions—a community centre and GP/health centre. The vision for the building was to provide a community centre that would complement the health services.

Binfield Parish Council took on the management of the centre in March 2024. This fantastic, fully accessible facility is able to provide many wellbeing and community services under one roof and gives opportunities for the growing community of Binfield to come together.

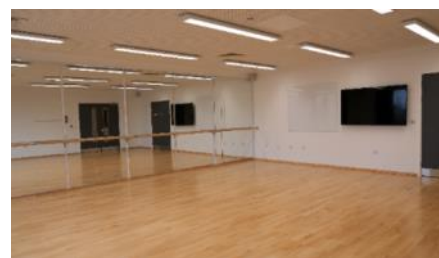
The Centre has been designed to be fully accessible.

### Community Centre Facilities

- Main double height hall space (10.5m x 16m)
- Kitchen and servery
- Multi-use room with mirrors and dance barre on a sprung floor (7.2m x 8m)
- Two meeting rooms which can open out into one larger space (4.2m x 6.5m)
- Support accommodation including WCs, changing area, office and storage

We are currently hoping to take bookings from May 2024, for all enquiries please contact us on [bookings@binfieldparish.gov.uk](mailto:bookings@binfieldparish.gov.uk).

Please keep an eye on our website and social media posts for more details



Ceri, Amanda, Purveen, Alisa & Tracey

01344 454602, Binfield Parish Council at the Parish Office, Benetfeld Road, Binfield, RG42 4EW

Parish Office working hours: 9.00am-1pm Monday to Friday

[office@binfieldparishcouncil.gov.uk](mailto:office@binfieldparishcouncil.gov.uk)

[www.binfieldparishcouncil.gov.uk](http://www.binfieldparishcouncil.gov.uk)

## COMMUNITY NEWS



### Merry May Mayhem!

Over here at The Den we are just about recovering from the madness that was the Easter break and the fabulous Binfield Easter Egg hunt – thank you so much to the organisers and everyone who joined in or put up with the craziness while we catered for all the extra demand.

**THE BINFIELD 10K ROAD RACE – Sunday May 19<sup>th</sup>** – the start and finish of the race are here outside the Den again, so it will be a bit busy here on that day. There are 900 runners signed up and it seems like the whole village gets involved – please cheer them all on if you can!

**SUMMER IS ON THE WAY!** – We are gearing up with more community activities planned for the next few months but we need to know what you would like to see happening here. Do you want more kids' activities? More Mum activities? More Dad activities? Something else for grownups? Please email ideas over – we are here for you!

Claire & Kerrin x

[foxesden.co.uk](http://foxesden.co.uk) @foxesdenbinfield 01344 305500  
Benetfeld Road, Binfield. RG42 4EW

### FOXY LUNCHES

If you are struggling to feed yourself or your family at any time, please don't go hungry.



These lunch boxes are **FREE** and we can arrange to have extra supplies delivered if you need them. Call or email me in the strictest confidence and we will make sure that you have food on your table. Claire xx  
07919448254 [claire@foxesden.co.uk](mailto:claire@foxesden.co.uk)

### The Shop in the Nook

Over the past few months we have been restocking our little gift shop in the Den. We also now have a featured guest seller shelf each month – pop in and see who it is this month! If you are interested in selling, please email [claire@foxesden.co.uk](mailto:claire@foxesden.co.uk). Along with our large selection of greetings cards we have you covered for last minute gifts.



**Party 'Bye' The Pitch**

**Saturday 6 July 2024**  
**4pm – 10pm**

Tickets on sale from 1 June at  
[www.ticketsource.co.uk/partybythepitch](http://www.ticketsource.co.uk/partybythepitch)

Live music, children's entertainer, fun and games stalls, licensed bar, BBQ, tea tent, ice cream and more!

@PartyByThePitch [www.facebook.com/partybythepitch](http://www.facebook.com/partybythepitch) partybythepitch@gmail.com

# COMMUNITY NEWS



## Binfield Tennis Association

### Recognising 20 years of service to Binfield Tennis Club



After two decades of loyal service, Tim Usher has been recognised for his contribution and commitment to the running of Binfield Tennis Club. Tim is the longest serving member of the Club's committee, with over 20 years of loyal service to Binfield Tennis Association!



Tim continues to work tirelessly behind the scenes to ensure club events run smoothly, and is a central figure coordinating play at club social tennis sessions each Sunday morning.

Tim (left) is pictured here receiving his long service award from the Club's Inclusion Officer, David Harper.



SCAN ME

To find out about membership and coaching at your local tennis club just scan the QR code →



ARMADILLO

BLUE POISON DART FROG



CARPET PYTHON



CAYMAN

EMERALD TREE BOA



GOELDIS MONKEY

HINGE BACK TORTOISE



IGUANA

MUDSKIPPER



PYGMY MARMOSETS



SLOTH

TARANTULA



TOUCAN

YELLOW KNOBBED CURASSOW

## LIVING RAINFOREST ANIMALS

Y T A M H G I R S A N P K A M I P E N S N  
 E W D N U I C L A J C W S E M R Y B T G O  
 L I T Y E K N O M S I D L E O G G I O U E  
 L J L Y E R T G F T H H Y R F U M E M M N  
 O S T E F T N R E O T T G R L I Y E E B N  
 W L H H H S Q P Y B R L U Y N D M R L L I  
 K O M I Z H V A R E A A T A T A A U Y A N  
 N O H T Y P T E P R A C C R S L R O A A T  
 O O D O O E T P T S S W K L D Z M E D G E  
 B L U E P O I S O N D A R T F R O G I Y J  
 B P A E S K S O A R S G R H O O S F R U O  
 E U E D S M I G E H T E T M A R E D F I F  
 D H E D U T I O E E E S D Q A N T W Z M S  
 C A U G F N I L I B N O O S L D S O Z D E  
 U M I A A N C T O U C A N A U G I D I N N  
 R I W N D N S A N A C U M O T A E L F S X  
 A S E N R E B R Y O P F X Y N E N M L E E  
 S H A G N D N R R E I D N R A H N O O D  
 S N C O T E H H D L I N L S R C T P E E I  
 O U A O O Y E C P B E H M I A H O O Y A G  
 W K I X L E B P I H O C G V T T T H N A T

JOIN US FOR OUR **FREE**

# Father's Day BBQ

**SUNDAY 16TH JUNE FROM 12:30PM**

**OUTSIDE THE FOXES DEN DONATIONS WELCOME**

**BAR AVAILABLE**

**PLUS A BOUNCY CASTLE!**

ALL SAINTS WITH ST MARK'S CHURCHES BINFIELD

## The Natural History of Binfield, Bracknell Forest and Berkshire

A talk by Mike Coker (Binfield Environment Group)

**June 25 2024, 7:30pm**  
**St. Mark's Church, Binfield, RG42 4AH**

Entry & refreshments by donation  
 Register via our website:  
[www.binfieldcofechurches.org.uk](http://www.binfieldcofechurches.org.uk)

**ECO CHURCH**  
 AN A Rocha UK Project

ALL SAINTS WITH ST MARK'S CHURCHES BINFIELD  
**All Saints' with St. Mark's Churches, Binfield**  
 Connecting people with Jesus, the Bible and Others

## PLANT SALE

**Saturday 25th May until Monday 27th May 2024**  
 at The Foxes' Den Cafe, Binfield (during opening hours)

Donations of plants and seedlings still very welcome!

[www.binfieldcofechurches.org.uk](http://www.binfieldcofechurches.org.uk)

ALL SAINTS WITH ST MARK'S CHURCHES BINFIELD  
**All Saints' with St. Mark's Churches, Binfield**  
 Connecting people with Jesus, the Bible and Others

We'd like to say a big *thank you* to our volunteers!

Whether you deliver Beacons, help out at the Fete or one of our groups, carry out maintenance jobs or have added a few coins into our collection boxes, you are all part of our community and help our church and Binfield thrive!

**You are invited to our drop-in Thank You event!**

**Sunday 5th May, 1-4pm at All Saints' Church**

With refreshments, music, bell tower and history tours and activities for the kids. We'd love to see you there!